



EN 1092

Elite Piping Manufacture Co.,Ltd
E-mail:info@elitepiping.com
<https://eliteflange.com>
Tel:+8618618291381

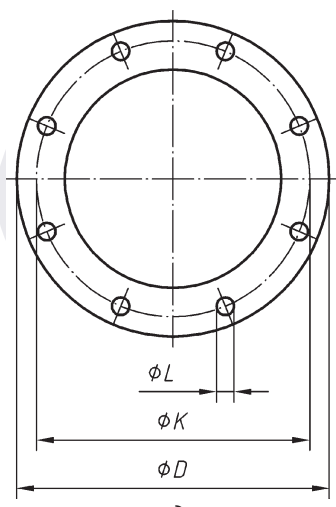
Dimensions of PN 2,5 flanges

Dimensions in millimetres

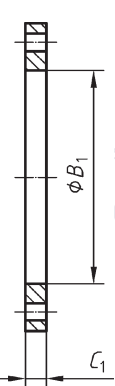
| DN | Mating dimensions | | | | | | Outside diameter of neck A | Bore diameters | | Flange thickness | | | | Collar thickness | | | | Centre portion G _{max} | Length | | | | | Neck diameters | | Corner radii R ₁ | Wall thickness S |
|------|-----------------------|------------------------------|----------------------------|---------|------|----------------|-------------------------------|----------------------------------|----------------|------------------|----------------|----------------|----|------------------|----|-------|----------------|------------------------------------|----------------|----------------|----------------|----------------|----------------|----------------|----|--------------------------------|---------------------|
| | Outside diameter D | Diameter of bolt circle K | Diameter of bolt hole L | Bolting | | B ₁ | | B ₂ | C ₁ | C ₂ | C ₃ | C ₄ | F | | | | H ₂ | | H ₃ | H ₄ | H ₅ | N ₁ | N ₃ | | | | |
| | | | | Number | Size | | | | | | | | | | | | | | | | | | | | | | |
| | Flange type | | | | | | | 11 21 ^b 35 — 37 | 01 32 | 02 | 01 02 | 11 21 | 05 | 32 | 35 | 36 | 37 | | 05 | 11 | 11 | 35 | 36 | 37 | 11 | | |
| 50 | 140 | 110 | 14 | 4 | M12 | 60,3 | 61,5 | 65 | 16 | 14 | 14 | 12 | 8 | 3 | 3 | — | 38 | 8 | 38 | 45 | 20 | 74 | 74 | 6 | | | |
| 65 | 160 | 130 | 14 | 4 | M12 | 76,1 | 77,5 | 81 | 16 | 14 | 14 | 12 | 8 | 3 | 3 | 55 | 38 | 9 | 38 | 45 | 20 | 88 | 94 | 6 | | | |
| 80 | 190 | 150 | 18 | 4 | M16 | 88,9 | 90,5 | 94 | 18 | 16 | 16 | 12 | 10 | 3 | 3 | 70 | 42 | 10 | 42 | 50 | 25 | 102 | 110 | 8 | | | |
| 100 | 210 | 170 | 18 | 4 | M16 | 114,3 | 116,0 | 120 | 18 | 16 | 16 | 14 | 10 | 4 | 4 | 90 | 45 | 10 | 45 | 52 | 25 | 130 | 130 | 8 | | | |
| 125 | 240 | 200 | 18 | 8 | M16 | 139,7 | 141,5 | 145 | 20 | 18 | 18 | 14 | 10 | 4 | 4 | 115 | 48 | 10 | 48 | 55 | 25 | 155 | 160 | 8 | | | |
| 150 | 265 | 225 | 18 | 8 | M16 | 168,3 | 170,5 | 174 | 20 | 18 | 18 | 14 | 10 | 5 | 4 | 140 | 48 | 12 | 48 | 55 | 25 | 184 | 182 | 10 | | | |
| 200 | 320 | 280 | 18 | 8 | M16 | 219,1 | 221,5 | 226 | 22 | 20 | 20 | 16 | 11 | 5 | 5 | 190 | 55 | 15 | 55 | 62 | 30 | 236 | 238 | 10 | | | |
| 250 | 375 | 335 | 18 | 12 | M16 | 273,0 | 276,5 | 281 | 24 | 22 | 22 | 18 | 12 | 8 | — | 235 | 60 | 15 | 60 | 68 | — | 290 | 284 | 12 | | | |
| 300 | 440 | 395 | 22 | 12 | M20 | 323,9 | 327,5 | 333 | 24 | 22 | 22 | 18 | 12 | 8 | — | 285 | 62 | 15 | 62 | 68 | — | 342 | 342 | 12 | | | |
| 350 | 490 | 445 | 22 | 12 | M20 | 355,6 | 359,5 | 365 | 26 | 22 | 22 | 18 | 13 | 8 | — | 330 | 62 | 15 | 62 | 68 | — | 385 | 392 | 12 | | | |
| 400 | 540 | 495 | 22 | 16 | M20 | 406,4 | 411,0 | 416 | 28 | 22 | 22 | 20 | 14 | 8 | — | 380 | 65 | 15 | 65 | 72 | — | 438 | 442 | 12 | | | |
| 450 | 595 | 550 | 22 | 16 | M20 | 457,0 | 462,0 | 467 | 30 | 22 | 24 | 20 | 15 | 8 | — | 425 | 65 | 15 | 65 | 72 | — | 492 | 494 | 12 | | | |
| 500 | 645 | 600 | 22 | 20 | M20 | 508,0 | 513,5 | 519 | 30 | 24 | 24 | 22 | 16 | 8 | — | 475 | 68 | 15 | 68 | 75 | — | 538 | 544 | 12 | | | |
| 600 | 755 | 705 | 26 | 20 | M24 | 610,0 | 616,5 | 622 | 32 | 30 | 30 | 22 | 16 | — | — | 575 | 70 | 16 | 70 | — | — | 640 | 642 | 12 | | | |
| 700 | 860 | 810 | 26 | 24 | M24 | 711,0 | | 721 | 40 | 30 | 40 | — | 16 | — | — | 670 | 76 | 16 | 70 | — | — | 740 | 746 | 12 | | | |
| 800 | 975 | 920 | 30 | 24 | M27 | 813,0 | | 824 | 44 | 30 | 44 | — | 16 | — | — | 770 | 76 | 16 | 70 | — | — | 842 | 850 | 12 | | | |
| 900 | 1075 | 1 020 | 30 | 24 | M27 | 914,0 | | 926 | 48 | 30 | 48 | — | 16 | — | — | 860 | 74 | 16 | 70 | — | — | 942 | 950 | 12 | | | |
| 1000 | 1175 | 1 120 | 30 | 28 | M27 | 1 016,0 | | 1 028 | 52 | 30 | 52 | — | 18 | — | — | 960 | 74 | 16 | 70 | — | — | 1 045 | 1 050 | 16 | | | |
| 1200 | 1375 | 1 320 | 30 | 32 | M27 | 1 219 | | 1 234 | 60 | 32 | 50 | — | 20 | — | — | 1 160 | 94 | 16 | 90 | — | — | 1 245 | — | 16 | | | |
| 1400 | 1575 | 1 520 | 30 | 36 | M27 | 1 422 | | | | 38 | — | — | — | — | — | — | 96 | 16 | — | — | — | 1 445 | — | 16 | | | |
| 1600 | 1790 | 1 730 | 30 | 40 | M27 | 1 626 | | | | 46 | — | — | — | — | — | — | 102 | 20 | — | — | — | 1 645 | — | 16 | | | |
| 1800 | 1990 | 1 930 | 30 | 44 | M27 | 1 829 | | | | 46 | — | — | — | — | — | — | 110 | 20 | — | — | — | 1 845 | — | 16 | | | |
| 2000 | 2190 | 2 130 | 30 | 48 | M27 | 2 032 | | | | 50 | — | — | — | — | — | — | 122 | 22 | — | — | — | 2 045 | — | 16 | | | |
| 2200 | 2405 | 2 340 | 33 | 52 | M30 | 2 235 | | | | 56 | — | — | — | — | — | — | 129 | 25 | — | — | — | 2 248 | — | 18 | | | |
| 2400 | 2605 | 2 540 | 33 | 56 | M30 | 2 438 | | | | 62 | — | — | — | — | — | — | 143 | 25 | — | — | — | 2 448 | — | 18 | | | |
| 2600 | 2805 | 2 740 | 33 | 60 | M30 | 2 620 | | | | 64 | — | — | — | — | — | — | 148 | 25 | — | — | — | 2 648 | — | 18 | | | |
| 2800 | 3030 | 2 960 | 36 | 64 | M33 | 2 820 | | | | 74 | — | — | — | — | — | — | 161 | 25 | — | — | — | 2 848 | — | 18 | | | |
| 3000 | 3230 | 3 160 | 36 | 68 | M33 | 3 020 | | | | 80 | — | — | — | — | — | — | 170 | 25 | — | — | — | 3 050 | — | 18 | | | |
| 3200 | 3430 | 3 360 | 36 | 72 | M33 | 3 220 | | | | 84 | — | — | — | — | — | — | 180 | 25 | — | — | — | 3 250 | — | 20 | | | |
| 3400 | 3630 | 3 560 | 36 | 76 | M33 | 3 420 | | | | 90 | — | — | — | — | — | — | 194 | 28 | — | — | — | 3 450 | — | 20 | | | |
| 3600 | 3840 | 3 770 | 36 | 80 | M33 | 3 620 | | | | 96 | — | — | — | — | — | — | 201 | 28 | — | — | — | 3 652 | — | 20 | | | |
| 3800 | 4045 | 3 970 | 39 | 80 | M36 | 3 820 | | | | 102 | — | — | — | — | — | — | 212 | 28 | — | — | — | 3 852 | — | 20 | | | |
| 4000 | 4245 | 4 170 | 39 | 84 | M36 | 4 020 | | | | 106 | — | — | — | — | — | — | 226 | 28 | — | — | — | 4 052 | — | 20 | | | |

See Annex A

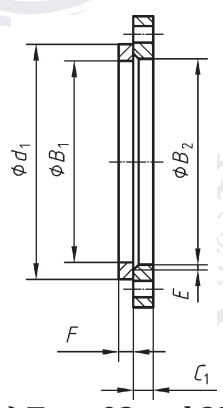
^a To be specified by the purchaser.
^b For flanges type 21 the outside hub diameter approximately corresponds to the outside pipe diameter and the nominal value dimensions A, N3 and R1 and their tolerances are included for guidance only.



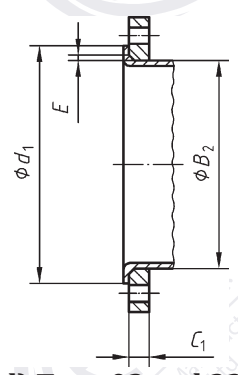
a)



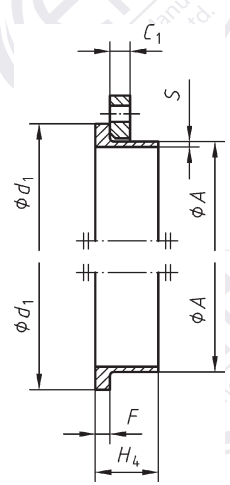
b) Type 01



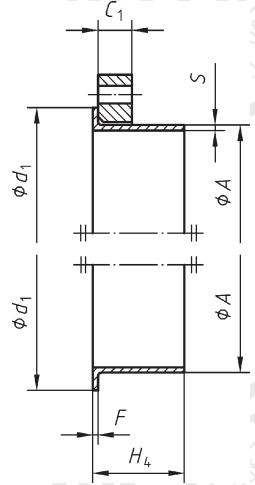
c) Type 02 and 32



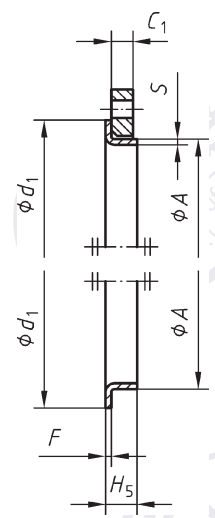
d) Type 02 and 33



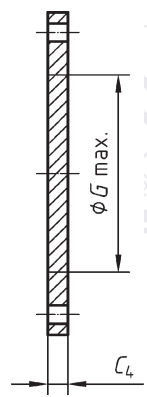
e) Type 02 and 35



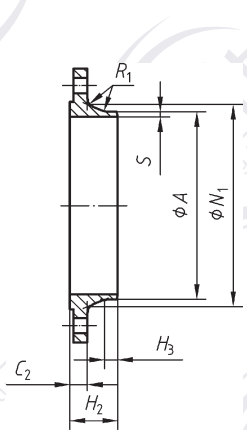
f) Type 02 and 36



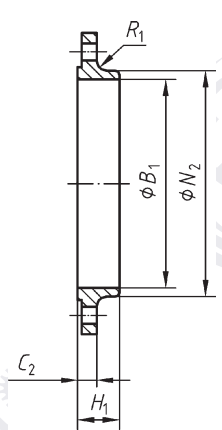
g) Type 02 and 37



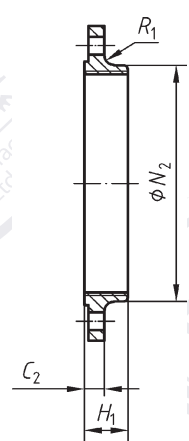
h) Type 05



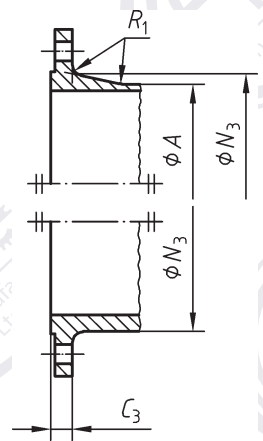
i) Type 11



j) Type 12



k) Type 13



l) Type 21

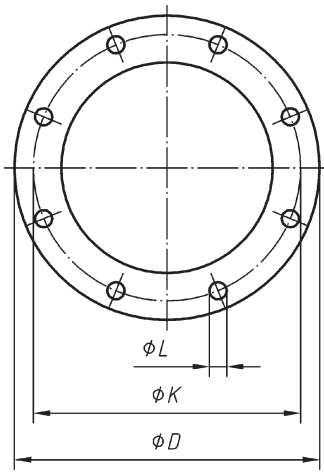
Dimensions of PN 6 flanges

Dimensions in millimetres

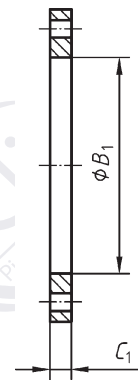
| DN | Mating dimensions | | | | | Outside diameter of neck A | Bore diameters | | Flange thickness | | | | Chamfer E | Collar thickness | | | | Centre portion G _{max} | Length | | | | | Neck diameters | | | Corner radii R ₁ | Wall thickness (see 5.6.1) S |
|----------------------------|-----------------------|------------------------------|----------------------------|---------|----------------------------------|-------------------------------|----------------|----------------|----------------------|----------------------------------|----------------|----|--------------|------------------|-----|-----|----------------|------------------------------------|----------------|----------------|----------------|----------------|----------------|----------------|----------------|----------------------|--------------------------------|---------------------------------|
| | Outside diameter D | Diameter of bolt circle K | Diameter of bolt hole L | Bolting | | | B ₁ | B ₂ | C ₁ | C ₂ C ₃ | C ₄ | F | | F | F | F | H ₁ | | H ₂ | H ₃ | H ₄ | H ₅ | N ₁ | N ₂ | N ₃ | | | |
| | | | | Number | Size | | | | | | | | | | | | | | | | | | | | | | | |
| | Flange type | | | | | | | | | | | | | | | | | | | | | | | | | | | |
| 01, 02, 05, 11, 12, 13, 21 | | | | | 11 21 ^a 35 - 37 | 01 12 32 | 02 | 01 02 | 11 12 13 21 | 05 | 02 | 32 | 35 | 36 | 37 | 05 | 12 13 | 11 | 11 | 35 | 36 | 37 | 11 | 12 13 | 21 | 11 12 13 21 | 11, 35 to 37 | |
| 10 | 75 | 50 | 11 | 4 | M10 | 17,2 | 18,0 | 21 | 12 | 12 | 12 | 3 | 10 | 5 | 2 | 2,5 | — | 20 | 28 | 6 | 28 | 35 | 7 | 26 | 25 | 20 | 4 | |
| 15 | 80 | 55 | 11 | 4 | M10 | 21,3 | 22,0 | 25 | 12 | 12 | 12 | 3 | 10 | 5 | 2 | 2,5 | — | 20 | 30 | 6 | 30 | 38 | 7 | 30 | 30 | 26 | 4 | |
| 20 | 90 | 65 | 11 | 4 | M10 | 26,9 | 27,5 | 31 | 14 | 14 | 14 | 4 | 10 | 6 | 2,5 | 3 | — | 24 | 32 | 6 | 32 | 40 | 8 | 38 | 40 | 34 | 4 | |
| 25 | 100 | 75 | 11 | 4 | M10 | 33,7 | 34,5 | 38 | 14 | 14 | 14 | 4 | 10 | 7 | 2,5 | 3 | — | 24 | 35 | 6 | 35 | 40 | 10 | 42 | 50 | 44 | 4 | |
| 32 | 120 | 90 | 14 | 4 | M12 | 42,4 | 43,5 | 46 | 16 | 14 | 14 | 5 | 10 | 8 | 3 | 3 | — | 26 | 35 | 6 | 35 | 42 | 12 | 55 | 60 | 54 | 6 | |
| 40 | 130 | 100 | 14 | 4 | M12 | 48,3 | 49,5 | 53 | 16 | 14 | 14 | 5 | 10 | 8 | 3 | 3 | — | 26 | 38 | 7 | 38 | 45 | 15 | 62 | 70 | 64 | 6 | |
| 50 | 140 | 110 | 14 | 4 | M12 | 60,3 | 61,5 | 65 | 16 | 14 | 14 | 5 | 12 | 8 | 3 | 3 | — | 28 | 38 | 8 | 38 | 45 | 20 | 74 | 80 | 74 | 6 | |
| 65 | 160 | 130 | 14 | 4 | M12 | 76,1 | 77,5 | 81 | 16 | 14 | 14 | 6 | 12 | 8 | 3 | 3 | 55 | 32 | 38 | 9 | 38 | 45 | 20 | 88 | 100 | 94 | 6 | |
| 80 | 190 | 150 | 18 | 4 | M16 | 88,9 | 90,5 | 94 | 18 | 16 | 16 | 6 | 12 | 10 | 3 | 3 | 70 | 34 | 42 | 10 | 42 | 50 | 25 | 102 | 110 | 110 | 8 | |
| 100 | 210 | 170 | 18 | 4 | M16 | 114,3 | 116,0 | 120 | 18 | 16 | 16 | 6 | 14 | 10 | 4 | 4 | 90 | 40 | 45 | 10 | 45 | 52 | 25 | 130 | 130 | 130 | 8 | |
| 125 | 240 | 200 | 18 | 8 | M16 | 139,7 | 141,5 | 145 | 20 | 18 | 18 | 6 | 14 | 10 | 4 | 4 | 115 | 44 | 48 | 10 | 48 | 55 | 25 | 155 | 160 | 160 | 8 | |
| 150 | 265 | 225 | 18 | 8 | M16 | 168,3 | 170,5 | 174 | 20 | 18 | 18 | 6 | 14 | 10 | 5 | 4 | 140 | 44 | 48 | 12 | 48 | 55 | 25 | 184 | 185 | 182 | 10 | |
| 200 | 320 | 280 | 18 | 8 | M16 | 219,1 | 221,5 | 226 | 22 | 20 | 20 | 6 | 16 | 11 | 5 | 5 | 190 | 44 | 55 | 15 | 55 | 62 | 30 | 236 | 240 | 238 | 10 | |
| 250 | 375 | 335 | 18 | 12 | M16 | 273,0 | 276,5 | 281 | 24 | 22 | 22 | 8 | 18 | 12 | 8 | | 235 | 44 | 60 | 15 | 60 | 68 | — | 290 | 295 | 284 | 12 | |
| 300 | 440 | 395 | 22 | 12 | M20 | 323,9 | 327,5 | 333 | 24 | 22 | 22 | 8 | 18 | 12 | 8 | | 285 | 44 | 62 | 15 | 62 | 68 | — | 342 | 355 | 342 | 12 | |
| 350 | 490 | 445 | 22 | 12 | M20 | 355,6 | 359,5 | 365 | 26 | 22 | 22 | 8 | 18 | 13 | 8 | | 330 | — | 62 | 15 | 62 | 68 | — | 385 | — | 392 | 12 | |
| 400 | 540 | 495 | 22 | 16 | M20 | 406,4 | 411,0 | 416 | 28 | 22 | 22 | 8 | 20 | 14 | 8 | | 380 | — | 65 | 15 | 65 | 72 | — | 438 | — | 442 | 12 | |
| 450 | 595 | 550 | 22 | 16 | M20 | 457,0 | 462,0 | 467 | 30 | 22 | 24 | 8 | 20 | 15 | 8 | — | 425 | — | 65 | 15 | 72 | 72 | — | 492 | — | 494 | 12 | |
| 500 | 645 | 600 | 22 | 20 | M20 | 508,0 | 513,5 | 519 | 30 | 24 | 24 | 8 | 22 | 16 | 8 | — | 475 | — | 68 | 15 | 75 | 75 | — | 538 | — | 544 | 12 | |
| 600 | 755 | 705 | 26 | 20 | M24 | 610,0 | 616,5 | 622 | 32 | 30 | 30 | 8 | 22 | 16 | — | — | 575 | — | 70 | 16 | 70 | — | — | 640 | — | 642 | 12 | |
| 700 | 860 | 810 | 26 | 24 | M24 | 711,0 | | 721 | 40 | 30 | 40 | 4 | — | 16 | — | — | 670 | — | 76 | 16 | 70 | — | — | 740 | — | 746 | 12 | |
| 800 | 975 | 920 | 30 | 24 | M27 | 813,0 | | 824 | 44 | 30 | 44 | 4 | — | 16 | — | — | 770 | — | 76 | 16 | 70 | — | — | 842 | — | 850 | 12 | |
| 900 | 1 075 | 1 020 | 30 | 24 | M27 | 914,0 | | 926 | 48 | 34 | 48 | 4 | — | 16 | — | — | 860 | — | 78 | 16 | 70 | — | — | 942 | — | 950 | 12 | |
| 1 000 | 1 175 | 1 120 | 30 | 28 | M27 | 1 016,0 | | 1 028 | 52 | 38 | 52 | 4 | — | 18 | — | — | 960 | — | 82 | 16 | 70 | — | — | 1 045 | — | 1 050 | 16 | |
| 1 200 | 1 405 | 1 340 | 33 | 32 | M30 | 1 219,0 | | 1 234 | 60 | 42 | 60 | 5 | — | 20 | — | — | 1 160 | — | 10 | 4 | 90 | — | — | 1 248 | — | 1 264 | 16 | |
| 1 400 | 1 630 | 1 560 | 36 | 36 | M33 | 1 422,0 | | — | 72 | 56 | 68 | — | — | — | — | — | 1 346 | — | 11 | 4 | 20 | — | — | 1 452 | — | 1 480 | 16 | |
| 1 600 | 1 830 | 1 760 | 36 | 40 | M33 | 1 626,0 | | — | 80 | 63 | 76 | — | — | — | — | — | 1 546 | — | 11 | 9 | 20 | — | — | 1 655 | — | 1 680 | 16 | |
| 1 800 | 2 045 | 1 970 | 39 | 44 | M36 | 1 829,0 | | — | 88 | 69 | 84 | — | — | — | — | — | 1 746 | — | 13 | 3 | 20 | — | — | 1 855 | — | 1 878 | 16 | |
| 2 000 | 2 265 | 2 180 | 42 | 48 | M39 | 2 032,0 | | — | 96 | 74 | 92 | — | — | — | — | — | 1 950 | — | 14 | 6 | 25 | — | — | 2 058 | — | 2 082 | 16 | |
| 2 200 | 2 475 | 2 390 | 42 | 52 | M39 | 2 235,0 | | — | — | — | 81 | — | — | — | — | — | — | — | 15 | 4 | 25 | — | — | 2 260 | — | — | 18 | |
| 2 400 | 2 685 | 2 600 | 42 | 56 | M39 | 2 438,0 | | — | — | — | 87 | — | — | — | — | — | — | — | 16 | 8 | 25 | — | — | 2 462 | — | — | 18 | |
| 2 600 | 2 905 | 2 810 | 48 | 60 | M45 | 2 620,0 | | — | — | — | 91 | — | — | — | — | — | — | — | 17 | 5 | 25 | — | — | 2 665 | — | — | 18 | |
| 2 800 | 3 115 | 3 020 | 48 | 64 | M45 | 2 820,0 | | — | — | — | 101 | — | — | — | — | — | — | — | 18 | 8 | 30 | — | — | 2 865 | — | — | 18 | |
| 3 000 | 3 315 | 3 220 | 48 | 68 | M45 | 3 020,0 | | — | — | — | 102 | — | — | — | — | — | — | — | 19 | 2 | 30 | — | — | 3 068 | — | — | 18 | |
| 3 200 | 3 525 | 3 430 | 48 | 72 | M45 | 3 220,0 | | — | — | — | 106 | — | — | — | — | — | — | — | 20 | 2 | 30 | — | — | 3 272 | — | — | 20 | |
| 3 400 | 3 735 | 3 640 | 48 | 76 | M45 | 3 420,0 | | — | — | — | 110 | — | — | — | — | — | — | — | 21 | 4 | 35 | — | — | 3 475 | — | — | 20 | |
| 3 600 | 3 970 | 3 860 | 56 | 80 | M52 | 3 620,0 | | — | — | — | 124 | — | — | — | — | — | — | — | 22 | 9 | 35 | — | — | 3 678 | — | — | 20 | |

See Annex A

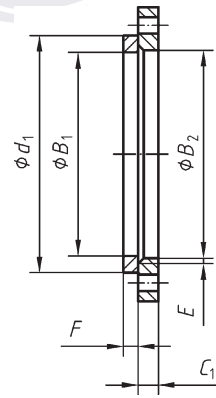
^a For flanges type 21 the outside hub diameter approximately corresponds to the outside pipe diameter and the nominal value dimensions A, N3 and R1 and their tolerances are included for guidance only.
^b To be specified by the purchaser.



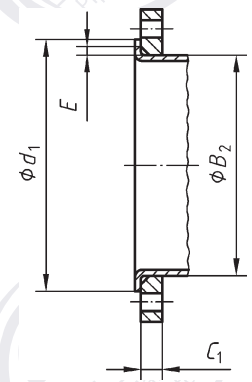
a)



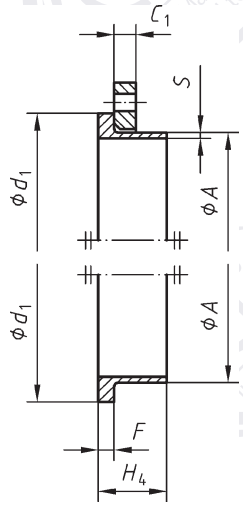
b) Type 01



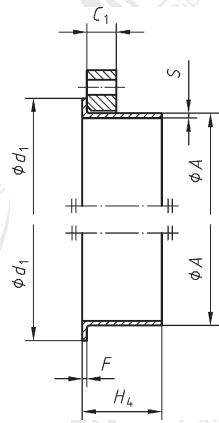
c) Type 02 and 32



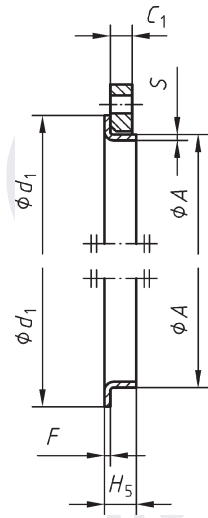
d) Type 02 and 33



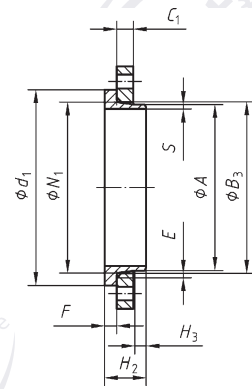
e) Type 02 and 35



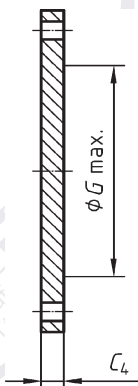
f) Type 02 and 36



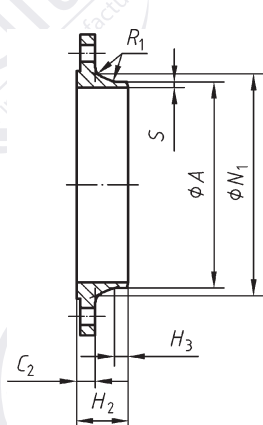
g) Type 02 and 37



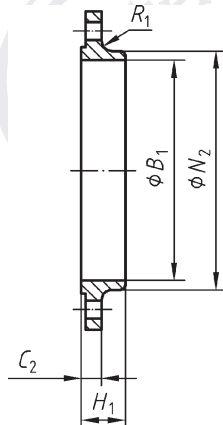
h) Type 04 and 34



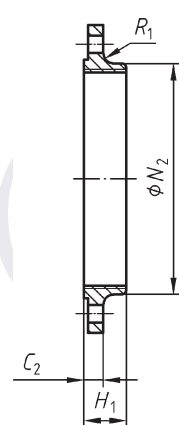
i) Type 05



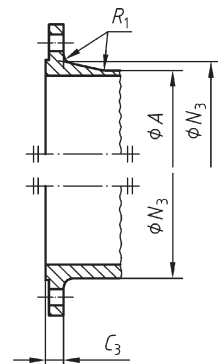
j) Type 11



k) Type 12



l) Type 13



m) Type 21

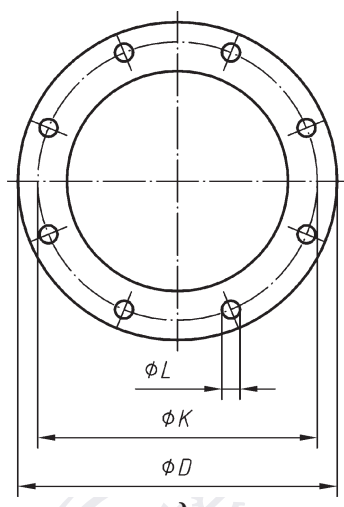
Dimensions of PN 10 flanges

Dimensions in millimetres

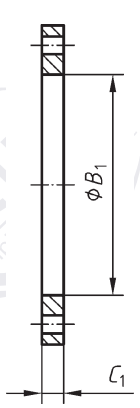
| DN | Mating dimensions | | | | | Outside diameter of neck A | Bore diameters | | | Flange thickness | | | | Chamfer E | Collar thickness F | | | | Centre portion G _{max} | Length | | | | | Neck diameters | | | Corner radii R ₁ | Wall thickness S | | |
|--------------------------------|-----------------------|------------------------------|----------------------------|----------------|------|---|----------------|----------------|----------------|------------------|----------------|----------------|----------------|--------------|-----------------------|----------------|----------------|----------------|------------------------------------|----------------|-----------------------|-----------------------|----------------|----------------|----------------|-----------------------|----------------|--------------------------------|--------------------------|----------------|--------------------|
| | Outside diameter D | Diameter of bolt circle K | Diameter of bolt hole L | Bolting | | | B ₁ | B ₂ | B ₃ | C ₁ | C ₂ | C ₃ | C ₄ | | F ₁ | F ₂ | F ₃ | F ₄ | | F ₅ | H ₁ | H ₂ | H ₃ | H ₄ | H ₅ | N ₁ | N ₂ | | | N ₃ | |
| | | | | Number | Size | | | | | | | | | | | | | | | | | | | | | | | | | | |
| | Flange type | | | | | | | | | | | | | | | | | | | | | | | | | | | | | | |
| 01, 02, 04, 05, 11, 12, 13, 21 | | | | | | 11 21 ^a 34 ^c 35-37 | 01 12 32 | 02 | 04 | 01 02 04 | 11 12 13 | 21 | 05 | 02 04 | 32 34 | 35 | 36 | 37 | 05 | 12 13 | 11 34 ^c | 11 34 ^c | 35 | 36 | 37 | 11 34 ^c | 12 13 | 21 | 11 12 13 21, 34 | 34 | 11, 35 to 37 |
| 10 | 90 | 60 | 14 | 4 | M12 | 17,2 | 18,0 | 21 | 31 | 14 | 16 | 16 | 16 | 3 | 12 | 5 | 2 | 2,5 | — | 22 | 35 | 6 | 35 | 35 | 7 | 28 | 30 | 28 | 4 | 1,8 | |
| 15 | 95 | 65 | 14 | 4 | M12 | 21,3 | 22,0 | 25 | 35 | 14 | 16 | 16 | 16 | 3 | 12 | 5 | 2 | 2,5 | — | 22 | 38 | 6 | 38 | 38 | 7 | 32 | 35 | 32 | 4 | 2,0 | |
| 20 | 105 | 75 | 14 | 4 | M12 | 26,9 | 27,5 | 31 | 42 | 16 | 18 | 18 | 18 | 4 | 14 | 6 | 2,5 | 3 | — | 26 | 40 | 6 | 40 | 40 | 8 | 40 | 45 | 40 | 4 | 2,3 | |
| 25 | 115 | 85 | 14 | 4 | M12 | 33,7 | 34,5 | 38 | 49 | 16 | 18 | 18 | 18 | 4 | 14 | 7 | 2,5 | 3 | — | 28 | 40 | 6 | 40 | 40 | 10 | 46 | 52 | 50 | 4 | 2,6 | |
| 32 | 140 | 100 | 18 | 4 | M16 | 42,4 | 43,5 | 47 | 59 | 18 | 18 | 18 | 18 | 5 | 14 | 8 | 3 | 3 | — | 30 | 42 | 6 | 42 | 42 | 12 | 56 | 60 | 60 | 6 | 2,6 | |
| 40 | 150 | 110 | 18 | 4 | M16 | 48,3 | 49,5 | 53 | 67 | 18 | 18 | 18 | 18 | 5 | 14 | 8 | 3 | 3 | — | 32 | 45 | 7 | 45 | 45 | 15 | 64 | 70 | 70 | 6 | 2,6 | |
| 50 | 165 | 125 | 18 | 4 | M16 | 60,3 | 61,5 | 65 | 77 | 20 | 18 | 18 | 18 | 5 | 16 | 8 | 3 | 3 | — | 28 | 45 | 8 | 45 | 45 | 20 | 74 | 84 | 84 | 6 | 2,9 | |
| 65 | 185 | 145 | 18 | g ^d | M16 | 76,1 | 77,5 | 81 | 96 | 20 | 18 | 18 | 18 | 6 | 16 | 8 | 3 | 3 | 55 | 32 | 45 | 10 | 45 | 45 | 20 | 92 | 104 | 104 | 6 | 2,9 | |
| 80 | 200 | 160 | 18 | 8 | M16 | 88,9 | 90,5 | 94 | 108 | 20 | 20 | 20 | 20 | 6 | 16 | 10 | 3 | 3 | 70 | 34 | 50 | 10 | 50 | 50 | 25 | 105 | 118 | 120 | 6 | 3,2 | |
| 100 | 220 | 180 | 18 | 8 | M16 | 114,3 | 116,0 | 120 | 134 | 22 | 20 | 20 | 20 | 6 | 18 | 10 | 4 | 4 | 90 | 40 | 52 | 12 | 52 | 52 | 25 | 131 | 140 | 140 | 8 | 3,6 | |
| 125 | 250 | 210 | 18 | 8 | M16 | 139,7 | 141,5 | 145 | 162 | 22 | 22 | 22 | 22 | 6 | 18 | 10 | 4 | 4 | 115 | 44 | 55 | 12 | 55 | 55 | 25 | 156 | 168 | 170 | 8 | 4,0 | |
| 150 | 285 | 240 | 22 | 8 | M20 | 168,3 | 170,5 | 174 | 188 | 24 | 22 | 22 | 22 | 6 | 20 | 10 | 5 | 4 | 140 | 44 | 55 | 12 | 55 | 55 | 25 | 184 | 195 | 190 | 10 | 4,5 | |
| 200 | 340 | 295 | 22 | 8 | M20 | 219,1 | 221,5 | 226 | 240 | 24 | 24 | 24 | 24 | 6 | 20 | 11 | 5 | 5 | 190 | 44 | 62 | 16 | 62 | 62 | 30 | 234 | 246 | 246 | 10 | 6,3 | |
| 250 | 395 | 350 | 22 | 12 | M20 | 273,0 | 276,5 | 281 | 294 | 26 | 26 | 26 | 26 | 8 | 22 | 12 | 8 | — | 235 | 46 | 68 | 16 | 68 | 68 | — | 292 | 298 | 298 | 12 | 6,3 | |
| 300 | 445 | 400 | 22 | 12 | M20 | 323,9 | 327,5 | 333 | 348 | 26 | 26 | 26 | 26 | 8 | 22 | 12 | 8 | — | 285 | 46 | 68 | 16 | 68 | 68 | — | 342 | 350 | 348 | 12 | 7,1 | |
| 350 | 505 | 460 | 22 | 16 | M20 | 355,6 | 359,5 | 365 | 400 | 30 | 26 | 26 | 26 | 8 | 22 | 13 | 8 | — | 330 | 53 | 68 | 16 | 68 | 68 | — | 385 | 400 | 408 | 12 | 7,1 | |
| 400 | 565 | 515 | 26 | 16 | M24 | 406,4 | 411,0 | 416 | 450 | 32 | 26 | 26 | 26 | 8 | 24 | 14 | 8 | — | 380 | 57 | 72 | 16 | 72 | 72 | — | 440 | 456 | 456 | 12 | 7,1 | |
| 450 | 615 | 565 | 26 | 20 | M24 | 457,0 | 462,0 | 467 | 498 | 36 | 28 | 28 | 28 | 8 | 24 | 15 | — | — | 425 | 63 | 72 | 16 | 72 | — | — | 488 | 502 | 502 | 12 | 7,1 | |
| 500 | 670 | 620 | 26 | 20 | M24 | 508,0 | 513,5 | 519 | 550 | 38 | 28 | 28 | 28 | 8 | 26 | 16 | — | — | 475 | 67 | 75 | 16 | 75 | — | — | 542 | 559 | 559 | 12 | 7,1 | |
| 600 | 780 | 725 | 30 | 20 | M27 | 610,0 | 616,5 | 622 | 650 | 42 | 30 | 34 | 34 | 8 | 26 | 18 | — | — | 575 | 75 | 82 | 18 | 80 | — | — | 642 | 658 | 658 | 12 | 8,0 | |
| 700 | 895 | 840 | 30 | 24 | M27 | 711,0 | | 721 | — | 50 | 35 | | | 38 | 8 | — | — | — | 670 | — | 85 | 18 | 80 | — | — | 746 | — | 772 | 12 | — | |
| 800 | 1015 | 950 | 33 | 24 | M30 | 813,0 | | 824 | — | 56 | 38 | | | 48 | 8 | — | — | — | 770 | — | 96 | 18 | 90 | — | — | 850 | — | 876 | 12 | — | |
| 900 | 1115 | 1050 | 33 | 28 | M30 | 914,0 | | 926 | — | 62 | 38 | | | 50 | 8 | — | — | — | 860 | — | 99 | 20 | 95 | — | — | 950 | — | 976 | 12 | — | |
| 1000 | 1230 | 1160 | 36 | 28 | M33 | 1016,0 | | 1028 | — | 70 | 44 | | | 54 | 8 | — | — | — | 960 | — | 105 | 20 | 95 | — | — | 1052 | — | 1080 | 16 | — | |
| 1200 | 1455 | 1380 | 39 | 32 | M36 | 1219,0 | | 1234 | — | 83 | 55 | | | 66 | 8 | — | — | — | 1160 | — | 132 | 25 | 115 | — | — | 1256 | — | 1292 | 16 | — | |
| 1400 | 1675 | 1590 | 42 | 36 | M39 | 1422,0 | — | — | — | | 65 | | | — | — | — | — | — | — | — | 143 | 25 | — | — | — | 1460 | — | 1496 | 16 | — | |
| 1600 | 1915 | 1820 | 48 | 40 | M45 | 1626,0 | — | — | — | | 75 | | | — | — | — | — | — | — | — | 159 | 25 | — | — | — | 1666 | — | 1712 | 16 | — | |
| 1800 | 2115 | 2020 | 48 | 44 | M45 | 1829,0 | — | — | — | | 85 | | | — | — | — | — | — | — | — | 175 | 30 | — | — | — | 1868 | — | 1910 | 16 | — | |
| 2000 | 2325 | 2230 | 48 | 48 | M45 | 2032,0 | — | — | — | | 90 | | | — | — | — | — | — | — | — | 186 | 30 | — | — | — | 2072 | — | 2120 | 16 | — | |
| 2200 | 2550 | 2440 | 56 | 52 | M52 | 2235,0 | — | — | — | | 100 | | | — | — | — | — | — | — | — | 202 | 35 | — | — | — | 2275 | — | — | 18 | — | |
| 2400 | 2760 | 2650 | 56 | 56 | M52 | 2438,0 | — | — | — | | 110 | | | — | — | — | — | — | — | — | 218 | 35 | — | — | — | 2478 | — | — | 18 | — | |
| 2600 | 2960 | 2850 | 56 | 60 | M52 | 2620,0 | — | — | — | | 110 | | | — | — | — | — | — | — | — | 224 | 40 | — | — | — | 2680 | — | — | 18 | — | |
| 2800 | 3180 | 3070 | 56 | 64 | M52 | 2820,0 | — | — | — | | 124 | | | — | — | — | — | — | — | — | 244 | 40 | — | — | — | 2882 | — | — | 18 | — | |
| 3000 | 3405 | 3290 | 62 | 68 | M56 | 3020,0 | — | — | — | | 132 | | | — | — | — | — | — | — | — | 257 | 45 | — | — | — | 3085 | — | — | 18 | — | |

See Annex A

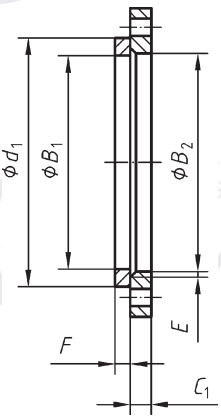
^a For flanges type 21 the outside hub diameter approximately corresponds to the outside pipe diameter and the nominal value dimensions A, N3 and R1 and their tolerances are included for guidance only.
^b To be specified by the purchaser.
^c Use is limited up to DN 600.
^d According to EN 1092-2 (Cast iron flanges) and EN 1092-3 (Copper alloy flanges), the flanges in this DN and PN may be supplied with 4 holes. Where steel flanges are required with 4 holes, these may be supplied by agreement between flange manufacturer and purchaser.



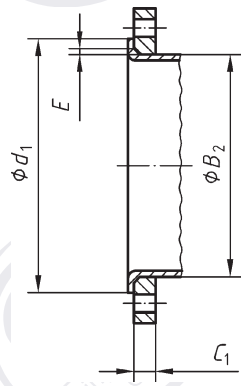
a)



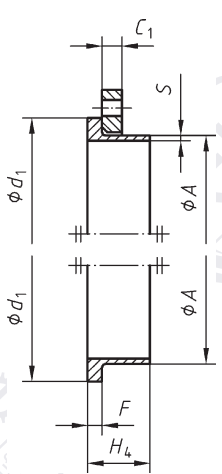
b) Type 01



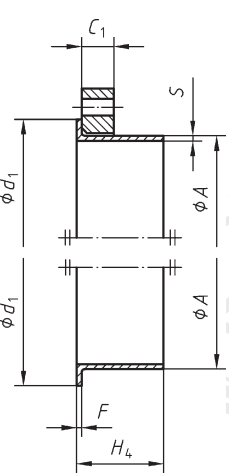
c) Type 02 and 32



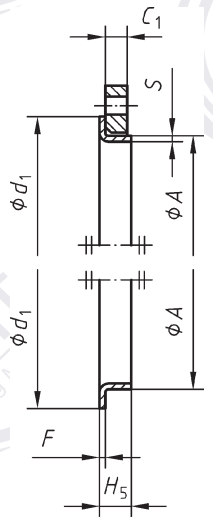
d) Type 02 and 33



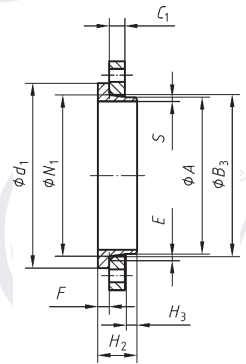
e) Type 02 and 35



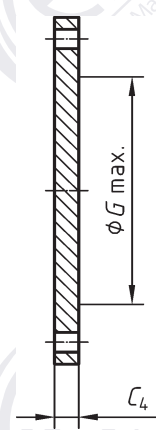
f) Type 02 and 36



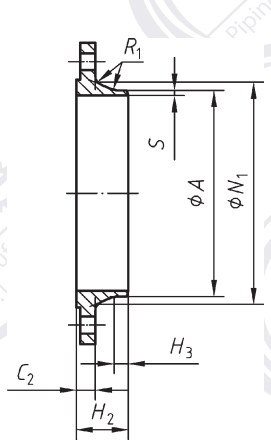
g) Type 02 and 37



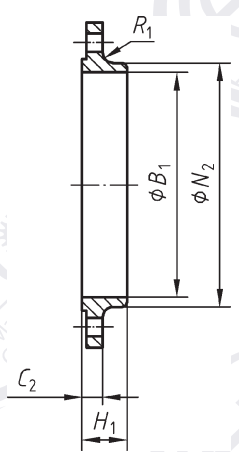
h) Type 04 and 34



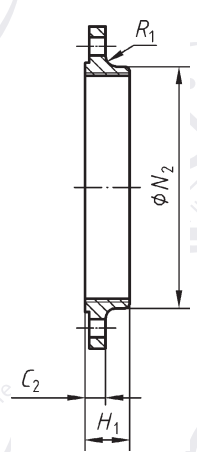
i) Type 05



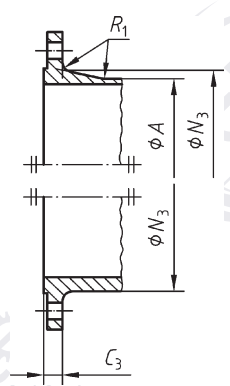
j) Type 11



k) Type 12



l) Type 13



m) Type 21

Dimensions of PN 16 flanges

Dimensions in millimetres

| DN | Mating dimensions | | | | | Outside diameter of neck | Bore diameters | | | Flange thickness | | | | Chamfer | Collar thickness | | | Centre portion | Length | | | | | Neck diameters | | | Corner radii | Wall thickness (see 5.6.1) | | | |
|-------|--------------------------------|-------------------------|-----------------------|----------------|------|---|----------------|----------------|----------------|------------------|----------------|----------------|----------------|----------|-----------------------|----|-----|----------------|--------|------------------|----------------|----------------|----------------|----------------|----------------|----------------|--------------|----------------------------|---------------------------------------|-----------------|-----------------------|
| | Outside diameter | Diameter of bolt circle | Diameter of bolt hole | Bolting | | | A | B ₁ | B ₂ | B ₃ | C ₁ | C ₂ | C ₃ | | C ₄ | E | F | | | G _{max} | H ₁ | H ₂ | H ₃ | H ₄ | H ₅ | N ₁ | | | N ₂ | N ₃ | R ₁ |
| | D | K | L | Number | Size | Flange type | | | | | | | | | | | | | | | | | | | | | | | | | |
| | 01, 02, 04, 05, 11, 12, 13, 21 | | | | | 11 21 ^a 34 ^d 35-37 | 01 12 32 | 02 | 04 | 01 02 04 | 11 12 13 | 21 | 05 | 02 04 | 32 34 ^d | 35 | 36 | 37 | 05 | 12 13 | 11 34 c,d | 11 34 c,d | 35 | 36 | 37 | 11 34 c,d | 12 13 | 21 | 11 12 13 21, 34 ^d | 34 ^d | 11, 35 to 37 |
| 10 | 90 | 60 | 14 | 4 | M12 | 17,2 | 18,0 | 21 | 31 | 14 | 16 | 16 | 16 | 3 | 12 | 5 | 2 | 2,5 | — | 22 | 35 | 6 | 35 | 35 | 7 | 28 | 30 | 28 | 4 | 1,8 | |
| 15 | 95 | 65 | 14 | 4 | M12 | 21,3 | 22,0 | 25 | 35 | 14 | 16 | 16 | 16 | 3 | 12 | 5 | 2 | 2,5 | — | 22 | 38 | 6 | 38 | 38 | 7 | 32 | 35 | 32 | 4 | 2,0 | |
| 20 | 105 | 75 | 14 | 4 | M12 | 26,9 | 27,5 | 31 | 42 | 16 | 18 | 18 | 18 | 4 | 14 | 6 | 2,5 | 3 | — | 26 | 40 | 6 | 40 | 40 | 8 | 40 | 45 | 40 | 4 | 2,3 | |
| 25 | 115 | 85 | 14 | 4 | M12 | 33,7 | 34,5 | 38 | 49 | 16 | 18 | 18 | 18 | 4 | 14 | 7 | 2,5 | 3 | — | 28 | 40 | 6 | 40 | 40 | 10 | 46 | 52 | 50 | 4 | 2,6 | |
| 32 | 140 | 100 | 18 | 4 | M16 | 42,4 | 43,5 | 47 | 59 | 18 | 18 | 18 | 18 | 5 | 14 | 8 | 3 | 3 | — | 30 | 42 | 6 | 42 | 42 | 12 | 56 | 60 | 60 | 6 | 2,6 | |
| 40 | 150 | 110 | 18 | 4 | M16 | 48,3 | 49,5 | 53 | 67 | 18 | 18 | 18 | 18 | 5 | 14 | 8 | 3 | 3 | — | 32 | 45 | 7 | 45 | 45 | 15 | 64 | 70 | 70 | 6 | 2,6 | |
| 50 | 165 | 125 | 18 | 4 | M16 | 60,3 | 61,5 | 65 | 77 | 20 | 18 | 18 | 18 | 5 | 16 | 8 | 3 | 3 | — | 28 | 45 | 8 | 45 | 45 | 20 | 74 | 84 | 84 | 6 | 2,9 | |
| 65 | 185 | 145 | 18 | g ^b | M16 | 76,1 | 77,5 | 81 | 96 | 20 | 18 | 18 | 18 | 6 | 16 | 8 | 3 | 3 | 55 | 32 | 45 | 10 | 45 | 45 | 20 | 92 | 104 | 104 | 6 | 2,9 | |
| 80 | 200 | 160 | 18 | 8 | M16 | 88,9 | 90,5 | 94 | 108 | 20 | 20 | 20 | 20 | 6 | 16 | 10 | 3 | 3 | 70 | 34 | 50 | 10 | 50 | 50 | 25 | 105 | 118 | 120 | 6 | 3,2 | |
| 100 | 220 | 180 | 18 | 8 | M16 | 114,3 | 116,0 | 120 | 134 | 22 | 20 | 20 | 20 | 6 | 18 | 10 | 4 | 4 | 90 | 40 | 52 | 12 | 52 | 52 | 25 | 131 | 140 | 140 | 8 | 3,6 | |
| 125 | 250 | 210 | 18 | 8 | M16 | 139,7 | 141,5 | 145 | 162 | 22 | 22 | 22 | 22 | 6 | 18 | 10 | 4 | 4 | 115 | 44 | 55 | 12 | 55 | 55 | 25 | 156 | 168 | 170 | 8 | 4,0 | |
| 150 | 285 | 240 | 22 | 8 | M20 | 168,3 | 170,5 | 174 | 188 | 24 | 22 | 22 | 22 | 6 | 20 | 10 | 5 | 5 | 140 | 44 | 55 | 12 | 55 | 55 | 25 | 184 | 195 | 190 | 10 | 4,5 | |
| 200 | 340 | 295 | 22 | 12 | M20 | 219,1 | 221,5 | 226 | 240 | 26 | 24 | 24 | 24 | 6 | 20 | 11 | 6 | 6 | 190 | 44 | 62 | 16 | 62 | 62 | 30 | 235 | 246 | 246 | 10 | 6,3 | |
| 250 | 405 | 355 | 26 | 12 | M24 | 273,0 | 276,5 | 281 | 294 | 29 | 26 | 26 | 26 | 8 | 22 | 12 | 10 | — | 235 | 46 | 70 | 16 | 70 | 68 | — | 292 | 298 | 296 | 12 | 6,3 | |
| 300 | 460 | 410 | 26 | 12 | M24 | 323,9 | 327,5 | 333 | 348 | 32 | 28 | 28 | 28 | 8 | 24 | 14 | 10 | — | 285 | 46 | 78 | 16 | 78 | 68 | — | 344 | 350 | 350 | 12 | 7,1 | |
| 350 | 520 | 470 | 26 | 16 | M24 | 355,6 | 359,5 | 365 | 400 | 35 | 30 | 30 | 30 | 8 | 26 | 18 | 10 | — | 330 | 57 | 82 | 16 | 82 | 68 | — | 390 | 400 | 410 | 12 | 8,0 | |
| 400 | 580 | 525 | 30 | 16 | M27 | 406,4 | 411,0 | 416 | 454 | 38 | 32 | 32 | 32 | 8 | 28 | 20 | 10 | — | 380 | 63 | 85 | 16 | 85 | 72 | — | 445 | 456 | 458 | 12 | 8,0 | |
| 450 | 640 | 585 | 30 | 20 | M27 | 457,0 | 462,0 | 467 | 500 | 42 | 34 | 40 | 40 | 8 | 30 | 22 | — | — | 425 | 68 | 83 | 16 | 87 | — | — | 490 | 502 | 516 | 12 | 8,0 | |
| 500 | 715 | 650 | 33 | 20 | M30 | 508,0 | 513,5 | 519 | 556 | 46 | 36 | 44 | 44 | 8 | 32 | 22 | — | — | 475 | 73 | 84 | 16 | 90 | — | — | 548 | 559 | 576 | 12 | 8,0 | |
| 600 | 840 | 770 | 36 | 20 | M33 | 610,0 | 616,5 | 622 | 660 | 55 | 40 | 54 | 54 | 8 | 32 | 24 | — | — | 575 | 83 | 88 | 18 | 95 | — | — | 670 | 658 | 690 | 12 | 8,8 | |
| 700 | 910 | 840 | 36 | 24 | M33 | 711,0 | c | 721 | — | 63 | 40 | c | 58 | 8 | — | 26 | — | — | 670 | 83 | 104 | 18 | 100 | — | — | 755 | 760 | 760 | 12 | — | |
| 800 | 1 025 | 950 | 39 | 24 | M36 | 813,0 | | 824 | — | 74 | 41 | | 62 | 8 | — | 28 | — | — | 770 | 90 | 108 | 20 | 105 | — | — | — | 855 | 864 | 862 | 12 | — |
| 900 | 1 125 | 1 050 | 39 | 28 | M36 | 914,0 | | 926 | — | 82 | 48 | | 64 | 8 | — | 30 | — | — | 860 | 94 | 118 | 20 | 110 | — | — | — | 955 | 968 | 962 | 12 | — |
| 1 000 | 1 255 | 1 170 | 42 | 28 | M39 | 1 016,0 | | 1 030 | — | 90 | 59 | | 68 | 8 | — | 35 | — | — | 960 | 100 | 137 | 22 | 120 | — | — | — | 1 058 | 1 072 | 1 076 | 16 | — |
| 1 200 | 1 485 | 1 390 | 48 | 32 | M45 | 1 219,0 | | — | — | — | 78 | | — | — | — | — | — | — | — | 1 160 | — | 160 | 30 | — | — | — | — | 1 262 | — | 1 282 | 16 |
| 1 400 | 1 685 | 1 590 | 48 | 36 | M45 | 1 422,0 | — | — | — | 84 | — | — | — | — | — | — | — | 1 346 | — | 177 | 30 | — | — | — | — | 1 465 | — | 1 482 | 16 | — | |
| 1 600 | 1 930 | 1 820 | 56 | 40 | M52 | 1 626,0 | — | — | — | 102 | — | — | — | — | — | — | — | 1 546 | — | 204 | 35 | — | — | — | — | 1 668 | — | 1 696 | 16 | — | |
| 1 800 | 2 130 | 2 020 | 56 | 44 | M52 | 1 829,0 | — | — | — | 110 | — | — | — | — | — | — | — | 1 746 | — | 218 | 35 | — | — | — | — | 1 870 | — | 1 896 | 16 | — | |
| 2 000 | 2 345 | 2 230 | 62 | 48 | M56 | 2 032,0 | — | — | — | 124 | — | — | — | — | — | — | — | 1 950 | — | 238 | 40 | — | — | — | — | 2 072 | — | 2 100 | 16 | — | |

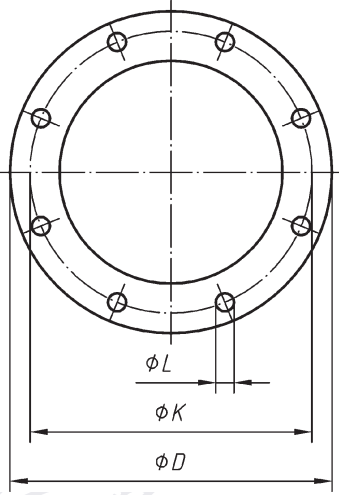
See Annex A

^a For flanges type 21 the outside hub diameter approximately corresponds to the outside pipe diameter and the nominal value dimensions A, N3 and R1 and their tolerances are included for guidance only.

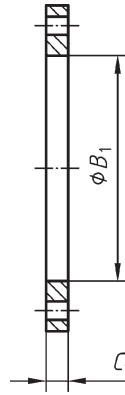
^b According to EN 1092-2 (Cast iron flanges) and EN 1092-3 (Copper alloy flanges), the flanges in this DN and PN may be supplied with 4 holes. Where steel flanges are required with 4 holes, these may be supplied by agreement between flange manufacturer and purchaser.

^c To be specified by the purchaser.

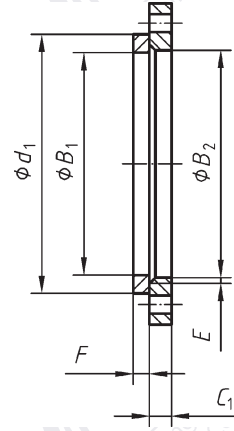
^d Use is limited up to DN 600.



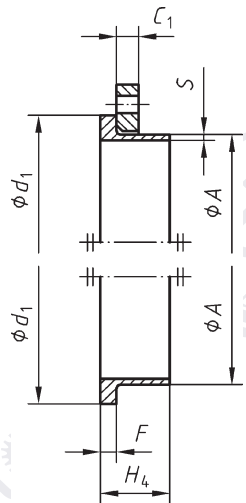
a)



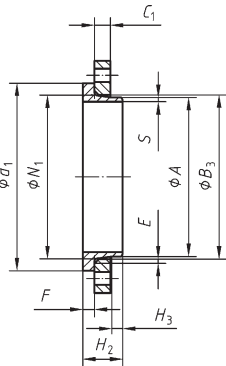
b) Type 01



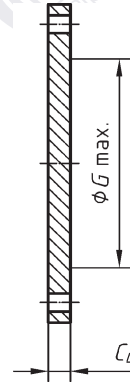
c) Type 02 and 32



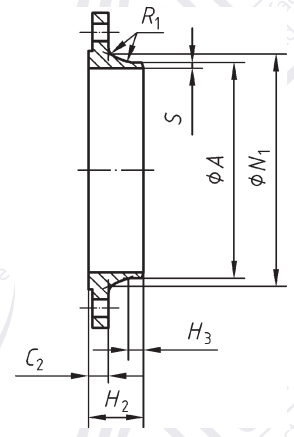
d) Type 02 and 35



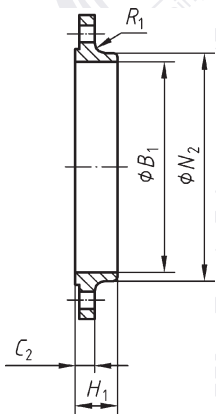
e) Type 04 and 34



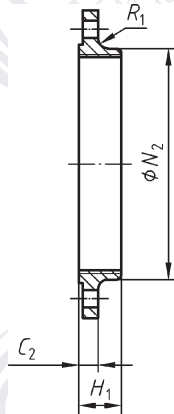
f) Type 05



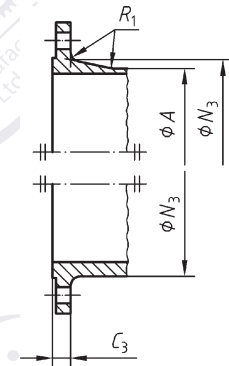
g) Type 11



h) Type 12



i) Type 13



j) Type 21

Dimensions of PN 25 flanges

Dimensions in millimetres

| DN | Mating dimensions | | | | | Outside diameter of neck A | Bore diameters | | | Flange thickness | | | | Chamfer E | Collar thickness F | Centre portion G _{max} | Length | | | | Neck diameters | | | Corner radii R ₁ | Wall thickness S | | |
|-------|--------------------------------|------------------------------|----------------------------|---------|------|---|----------------|----------------|----------------|------------------|----------------|----------------|----------------|--------------|-----------------------|------------------------------------|----------------|----------------|-----------------------|-----------------------|----------------|----------------|----------------|--------------------------------|------------------------|------|-----------|
| | Outside diameter D | Diameter of bolt circle K | Diameter of bolt hole L | Bolting | | | B ₁ | B ₂ | B ₃ | C ₁ | C ₂ | C ₃ | C ₄ | | | | H ₁ | H ₂ | H ₃ | H ₄ | N ₁ | N ₂ | N ₃ | | | | |
| | | | | Number | Size | | | | | | | | | | | | | | | | | | | | | | |
| | Flange type | | | | | | | | | | | | | | | | | | | | | | | | | | |
| | 01, 02, 04, 05, 11, 12, 13, 21 | | | | | 11, 21 ^a 34 ^c , 35 | 01 12 32 | 02 | 04 | 01 02 04 | 11 12 13 | 21 | 05 | 02 04 | 32 34 | 35 | 05 | 12 13 | 11 34 ^c | 11 34 ^c | 35 | 11 34 | 12 13 | 21 | 11, 12 13 21, 34 | 34 | 11, 35 |
| 10 | 90 | 60 | 14 | 4 | M12 | 17,2 | 18,0 | 21 | 31 | 14 | 16 | 16 | 16 | 3 | 12 | 5 | — | 22 | 35 | 6 | 35 | 28 | 30 | 28 | 4 | 1,8 | |
| 15 | 95 | 65 | 14 | 4 | M12 | 21,3 | 22,0 | 25 | 35 | 14 | 16 | 16 | 16 | 3 | 12 | 5 | — | 22 | 38 | 6 | 38 | 32 | 35 | 32 | 4 | 2,0 | |
| 20 | 105 | 75 | 14 | 4 | M12 | 26,9 | 27,5 | 31 | 42 | 16 | 18 | 18 | 18 | 4 | 14 | 6 | — | 26 | 40 | 6 | 40 | 40 | 45 | 40 | 4 | 2,3 | |
| 25 | 115 | 85 | 14 | 4 | M12 | 33,7 | 34,5 | 38 | 49 | 16 | 18 | 18 | 18 | 4 | 14 | 7 | — | 28 | 40 | 6 | 40 | 46 | 52 | 50 | 4 | 2,6 | |
| 32 | 140 | 100 | 18 | 4 | M16 | 42,4 | 43,5 | 47 | 59 | 18 | 18 | 18 | 18 | 5 | 14 | 8 | — | 30 | 42 | 6 | 42 | 56 | 60 | 60 | 6 | 2,6 | |
| 40 | 150 | 110 | 18 | 4 | M16 | 48,3 | 49,5 | 53 | 67 | 18 | 18 | 18 | 18 | 5 | 14 | 8 | — | 32 | 45 | 7 | 45 | 64 | 70 | 70 | 6 | 2,6 | |
| 50 | 165 | 125 | 18 | 4 | M16 | 60,3 | 61,5 | 65 | 77 | 20 | 20 | 20 | 20 | 5 | 16 | 10 | — | 34 | 48 | 8 | 48 | 75 | 84 | 84 | 6 | 2,9 | |
| 65 | 185 | 145 | 18 | 8 | M16 | 76,1 | 77,5 | 81 | 96 | 22 | 22 | 22 | 22 | 6 | 16 | 11 | 55 | 38 | 52 | 10 | 52 | 90 | 104 | 104 | 6 | 2,9 | |
| 80 | 200 | 160 | 18 | 8 | M16 | 88,9 | 90,5 | 94 | 114 | 24 | 24 | 24 | 24 | 6 | 18 | 12 | 70 | 40 | 58 | 12 | 58 | 105 | 118 | 120 | 8 | 3,2 | |
| 100 | 235 | 190 | 22 | 8 | M20 | 114,3 | 116,0 | 120 | 138 | 26 | 24 | 24 | 24 | 6 | 20 | 14 | 90 | 44 | 65 | 12 | 65 | 134 | 145 | 142 | 8 | 3,6 | |
| 125 | 270 | 220 | 26 | 8 | M24 | 139,7 | 141,5 | 145 | 166 | 28 | 26 | 26 | 26 | 6 | 22 | 16 | 115 | 48 | 68 | 12 | 68 | 162 | 170 | 162 | 8 | 4,0 | |
| 150 | 300 | 250 | 26 | 8 | M24 | 168,3 | 170,5 | 174 | 194 | 30 | 28 | 28 | 28 | 6 | 24 | 18 | 140 | 52 | 75 | 12 | 75 | 192 | 200 | 192 | 10 | 4,5 | |
| 200 | 360 | 310 | 26 | 12 | M24 | 219,1 | 221,5 | 226 | 250 | 32 | 30 | 30 | 30 | 6 | 26 | 18 | 190 | 52 | 80 | 16 | 80 | 244 | 256 | 252 | 10 | 6,3 | |
| 250 | 425 | 370 | 30 | 12 | M27 | 273,0 | 276,5 | 281 | 302 | 35 | 32 | 32 | 32 | 8 | 26 | 18 | 235 | 60 | 88 | 18 | 88 | 298 | 310 | 304 | 12 | 7,1 | |
| 300 | 485 | 430 | 30 | 16 | M27 | 323,9 | 327,5 | 333 | 356 | 38 | 34 | 34 | 34 | 8 | 28 | 20 | 285 | 67 | 92 | 18 | 92 | 352 | 364 | 364 | 12 | 8,0 | |
| 350 | 555 | 490 | 33 | 16 | M30 | 355,6 | 359,5 | 365 | 408 | 42 | 38 | 38 | 38 | 8 | 32 | 22 | 332 | 72 | 100 | 20 | 100 | 398 | 418 | 418 | 12 | 8,0 | |
| 400 | 620 | 550 | 36 | 16 | M33 | 406,4 | 411,0 | 416 | 462 | 48 | 40 | 40 | 40 | 8 | 34 | 24 | 380 | 78 | 110 | 20 | 110 | 452 | 472 | 472 | 12 | 8,8 | |
| 450 | 670 | 600 | 36 | 20 | M33 | 457,0 | 462,0 | 467 | 510 | 54 | 46 | 46 | 50 | 8 | 36 | 26 | 425 | 84 | 110 | 20 | 110 | 500 | 520 | 520 | 12 | 8,8 | |
| 500 | 730 | 660 | 36 | 20 | M33 | 508,0 | 513,5 | 519 | 568 | 58 | 48 | 48 | 51 | 8 | 38 | 28 | 475 | 90 | 125 | 20 | 125 | 558 | 580 | 580 | 12 | 10,0 | |
| 600 | 845 | 770 | 39 | 20 | M36 | 610,0 | 616,5 | 622 | 670 | 68 | 48 | 58 | 66 | 8 | 40 | 30 | 575 | 100 | 125 | 20 | 125 | 660 | 684 | 684 | 12 | 11,0 | |
| 700 | 960 | 875 | 42 | 24 | M39 | 711,0 | | 721 | — | 85 | 50 | | | 8 | — | 30 | — | — | 129 | 20 | 125 | 760 | — | 780 | 12 | — | |
| 800 | 1 085 | 990 | 48 | 24 | M45 | 813,0 | | 824 | — | 95 | 53 | | | 8 | — | 35 | — | — | 138 | 22 | 135 | 864 | — | 882 | 12 | — | |
| 900 | 1 185 | 1 090 | 48 | 28 | M45 | 914,0 | | — | — | b | 57 | | | — | — | — | — | — | 148 | 24 | — | 968 | — | 982 | 12 | — | |
| 1 000 | 1 320 | 1 210 | 56 | 28 | M52 | 1 016,0 | | — | — | b | 63 | | | — | — | — | — | — | 160 | 24 | — | 1 070 | — | 1 086 | 16 | — | |
| 1 200 | | | | | | | | | | | | | | | | | | | | | | | | | | | |
| 1 400 | | | | | | | | | | | | | | | | | | | | | | | | | | | |
| 1 600 | | | | | | | | | | | | | | | | | | | | | | | | | | | |
| 1 800 | | | | | | | | | | | | | | | | | | | | | | | | | | | |
| 2 000 | | | | | | | | | | | | | | | | | | | | | | | | | | | |

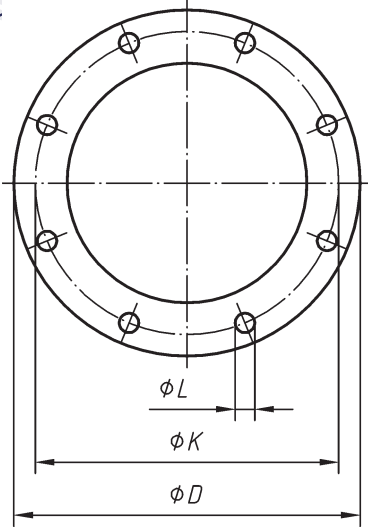
See Annex A

^a For flanges type 21 the outside hub diameter approximately corresponds to the outside pipe diameter and the nominal value dimensions A, N3 and R1 and their tolerances are included for guidance only.

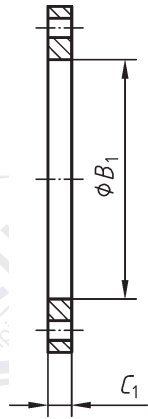
^b To be specified by the purchaser.

^c Use is limited up to DN 500.

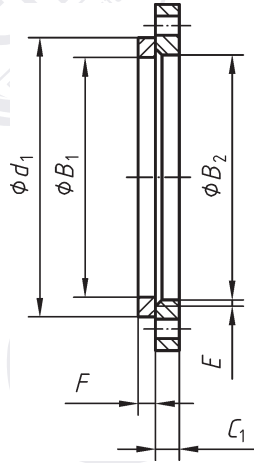
^d Only mating dimensions fixed, see Annex J.



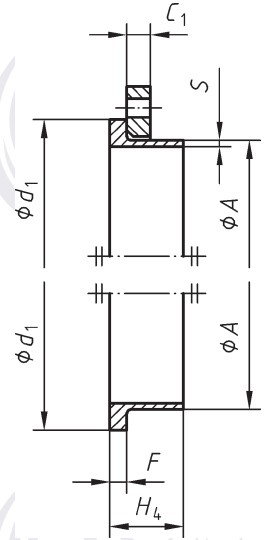
a)



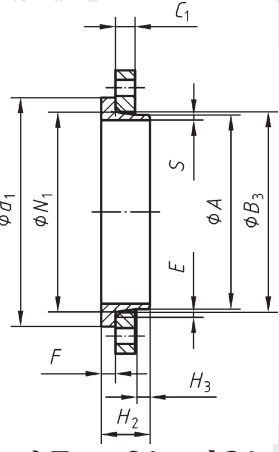
b) Type 01



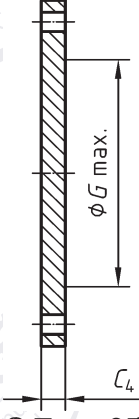
c) Type 02 and 32



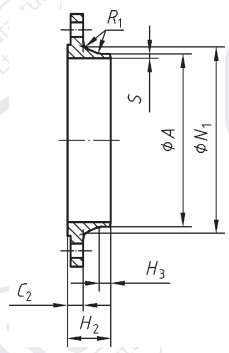
d) Type 02 and 35



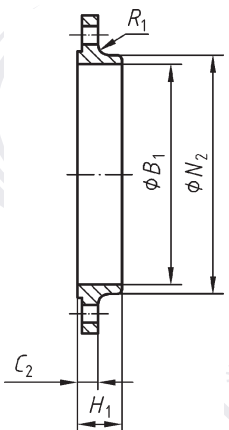
e) Type 04 and 34



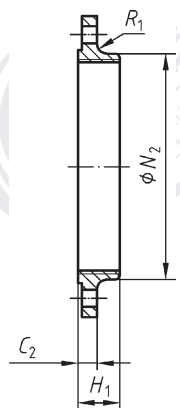
f) Type 05



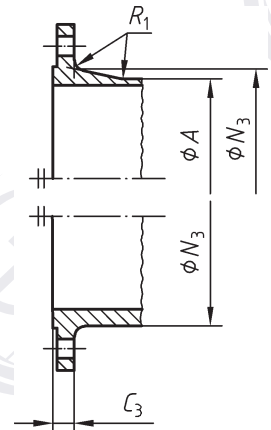
g) Type 11



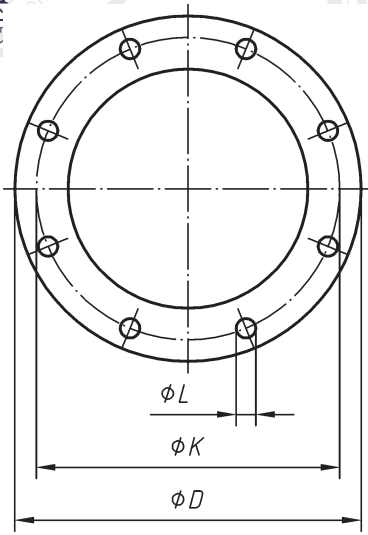
h) Type 12



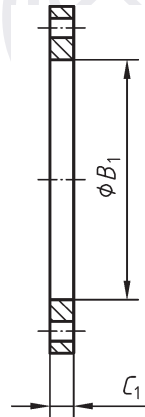
i) Type 13



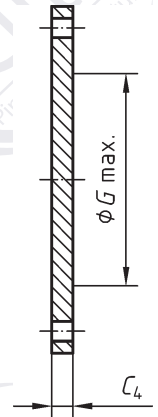
j) Type 21



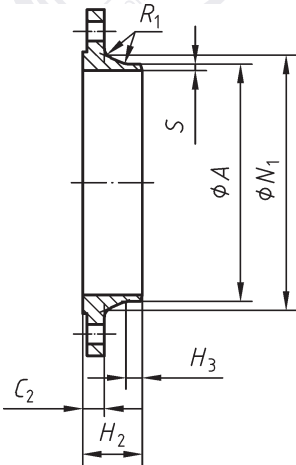
a)



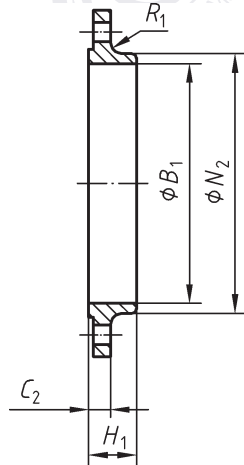
b) Type 01



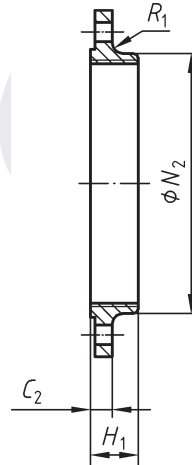
c) Type 05



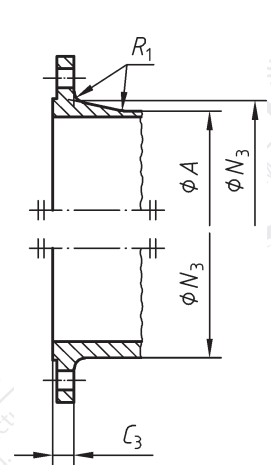
d) Type 11



e) Type 12



f) Type 13



g) Type 21

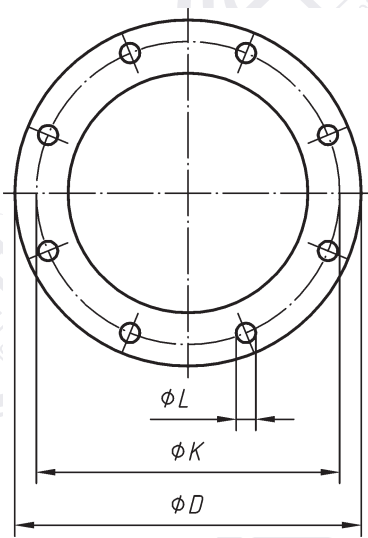
Dimensions of PN 63 flanges

Dimensions in millimetres

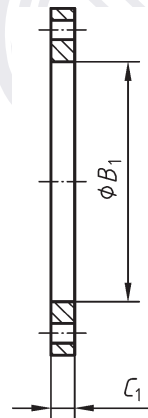
| DN | Mating dimensions | | | | | Outside diameter of neck A | Bore diameter B ₁ | Flange thickness | | | | | Centre portion G _{max} | Length | | | Neck diameters | | | Corner radii R ₁ | Wall thickness (see 5.6.1) S |
|------------------------|-----------------------|------------------------------|----------------------------|---------|------|-------------------------------|---------------------------------|------------------|----------------|----------------|----------------|----------------|------------------------------------|----------------|----------------|----------------|----------------|----------------|----------------------|--------------------------------|---------------------------------|
| | Outside diameter D | Diameter of bolt circle K | Diameter of bolt hole L | Bolting | | | | C ₁ | C ₂ | C ₃ | C ₄ | H ₁ | | H ₂ | H ₃ | N ₁ | N ₂ | N ₃ | | | |
| | | | | Number | Size | | | | | | | | | | | | | | | | |
| | Flange type | | | | | | | | | | | | | | | | | | | | |
| 01, 05, 11, 12, 13, 21 | | | | | | 11 21 ^a | 01 12 | 01 | 11 12 13 | 21 | 05 | 05 | 12 13 | 11 | 11 | 11 | 12 13 | 21 | 11 12 13 21 | | |
| 10 | 100 | 70 | 14 | 4 | M12 | 17,2 | 18,0 | 20 | 20 | 20 | 20 | — | 28 | 45 | 6 | 32 | 40 | 40 | 4 | See Annex A | |
| 15 | 105 | 75 | 14 | 4 | M12 | 21,3 | 22,0 | 20 | 20 | 20 | 20 | — | 28 | 45 | 6 | 34 | 43 | 45 | 4 | | |
| 20 | 130 | 90 | 18 | 4 | M16 | 26,9 | 27,5 | 22 | 22 | 22 | 22 | — | 30 | 48 | 8 | 42 | 52 | 50 | 4 | | |
| 25 | 140 | 100 | 18 | 4 | M16 | 33,7 | 34,5 | 24 | 24 | 24 | 24 | — | 32 | 58 | 8 | 52 | 60 | 61 | 4 | | |
| 32 | 155 | 110 | 22 | 4 | M20 | 42,4 | 43,5 | 24 | 24 | 26 | 24 | — | 32 | 60 | 8 | 62 | 68 | 68 | 6 | | |
| 40 | 170 | 125 | 22 | 4 | M20 | 48,3 | 49,5 | 26 | 26 | 28 | 26 | — | 34 | 62 | 10 | 70 | 80 | 82 | 6 | | |
| 50 | 180 | 135 | 22 | 4 | M20 | 60,3 | 61,5 | 26 | 26 | 26 | 26 | — | 36 | 62 | 10 | 82 | 90 | 90 | 6 | | |
| 65 | 205 | 160 | 22 | 8 | M20 | 76,1 | 77,5 | 26 | 26 | 26 | 26 | 45 | 40 | 68 | 12 | 98 | 112 | 105 | 6 | | |
| 80 | 215 | 170 | 22 | 8 | M20 | 88,9 | 90,5 | 30 | 28 | 28 | 28 | 60 | 44 | 72 | 12 | 112 | 125 | 122 | 8 | | |
| 100 | 250 | 200 | 26 | 8 | M24 | 114,3 | 116,0 | 32 | 30 | 30 | 30 | 80 | 52 | 78 | 12 | 138 | 152 | 146 | 8 | | |
| 125 | 295 | 240 | 30 | 8 | M27 | 139,7 | 141,5 | 34 | 34 | 34 | 34 | 105 | 56 | 88 | 12 | 168 | 185 | 177 | 8 | | |
| 150 | 345 | 280 | 33 | 8 | M30 | 168,3 | 170,5 | 36 | 36 | 36 | 36 | 130 | 60 | 95 | 12 | 202 | 215 | 204 | 10 | | |
| 200 | 415 | 345 | 36 | 12 | M33 | 219,1 | 221,5 | 48 | 42 | 42 | 42 | 180 | — | 110 | 16 | 256 | — | 264 | 10 | | |
| 250 | 470 | 400 | 36 | 12 | M33 | 273,0 | 276,5 | 55 | 46 | 46 | 46 | 220 | — | 125 | 18 | 316 | — | 320 | 12 | | |
| 300 | 530 | 460 | 36 | 16 | M33 | 323,9 | 327,5 | 65 | 52 | 52 | 52 | 270 | — | 140 | 18 | 372 | — | 378 | 12 | | |
| 350 | 600 | 525 | 39 | 16 | M36 | 355,6 | 359,5 | 72 | 56 | 56 | 56 | 310 | — | 150 | 20 | 420 | — | 434 | 12 | | |
| 400 | 670 | 585 | 42 | 16 | M39 | 406,4 | 411,0 | 80 | 60 | 60 | 60 | 360 | — | 160 | 20 | 475 | — | 490 | 12 | | |
| 500 | b | | | | | | | | | | | | | | | | | | | | |
| 600 | | | | | | | | | | | | | | | | | | | | | |
| 700 | | | | | | | | | | | | | | | | | | | | | |
| 800 | | | | | | | | | | | | | | | | | | | | | |
| 900 | | | | | | | | | | | | | | | | | | | | | |
| 1 000 | | | | | | | | | | | | | | | | | | | | | |
| 1 200 | | | | | | | | | | | | | | | | | | | | | |

^a For flanges type 21 the outside hub diameter approximately corresponds to the outside pipe diameter and the nominal value dimensions A, N₃ and R₁ and their tolerances are included for guidance only.

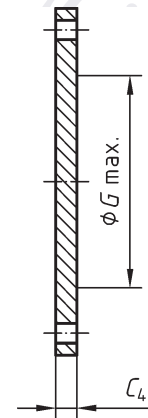
^b Only mating dimensions fixed, see Annex J.



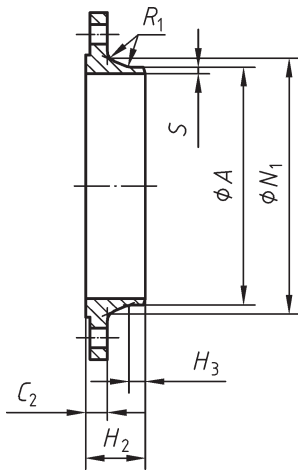
a)



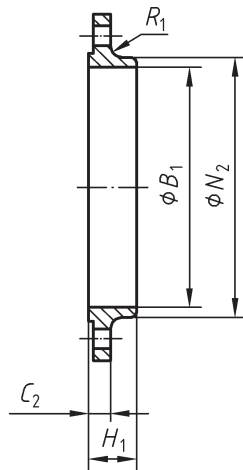
b) Type 01



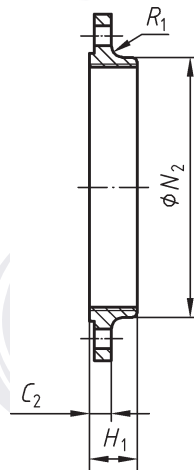
c) Type 05



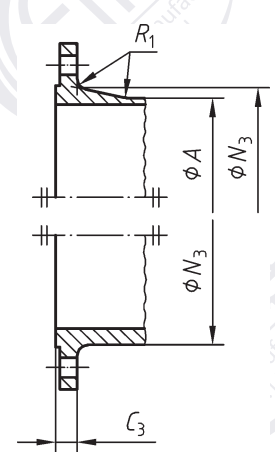
d) Type 11



e) Type 12



f) Type 13



g) Type 21

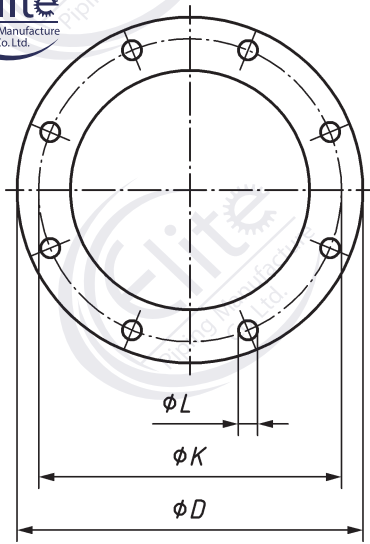
Dimensions of PN 100 flanges

Dimensions in millimetres

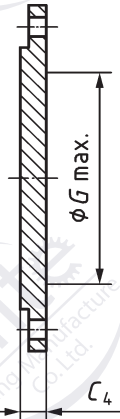
| DN | Mating dimensions | | | | | | Outside diameter of neck A | Bore diameter B ₁ | Flange thickness | | | | | Centre portion G _{max} | Length | | | Neck diameters | | | Corner radii R ₁ | Wall thickness (see 5.6.1) S |
|------------------------|-----------------------|------------------------------|----------------------------|---------|------|----------------|-------------------------------|---------------------------------|------------------|----------------|----------------|----------------|----------------|------------------------------------|----------------|----------------|----------------|----------------|----|----------------------|--------------------------------|---------------------------------|
| | Outside diameter D | Diameter of bolt circle K | Diameter of bolt hole L | Bolting | | C ₁ | | | C ₂ | C ₃ | C ₄ | H ₁ | H ₂ | | H ₃ | N ₁ | N ₂ | N ₃ | | | | |
| | | | | Number | Size | | | | | | | | | | | | | | | | | |
| Flange type | | | | | | | | | | | | | | | | | | | | | | |
| 01, 05, 11, 12, 13, 21 | | | | | | | 11 21 ^a | 01 12 | 01 | 11 12 13 | 21 | 05 | 05 | 12 13 | 11 | 11 | 11 | 12 13 | 21 | 11 12 13 21 | | |
| 10 | 100 | 70 | 14 | 4 | M12 | 17,2 | 18,0 | 20 | 20 | 20 | 20 | — | 28 | 45 | 6 | 32 | 40 | 40 | 4 | | | |
| 15 | 105 | 75 | 14 | 4 | M12 | 21,3 | 22,0 | 20 | 20 | 20 | 20 | — | 28 | 45 | 6 | 34 | 43 | 45 | 4 | | | |
| 20 | 130 | 90 | 18 | 4 | M16 | 26,9 | 27,5 | 22 | 22 | 22 | 22 | — | 30 | 48 | 8 | 42 | 52 | 50 | 4 | | | |
| 25 | 140 | 100 | 18 | 4 | M16 | 33,7 | 34,5 | 24 | 24 | 24 | 24 | — | 32 | 58 | 8 | 52 | 60 | 61 | 4 | | | |
| 32 | 155 | 110 | 22 | 4 | M20 | 42,4 | 43,5 | 24 | 24 | 26 | 24 | — | 32 | 60 | 8 | 62 | 68 | 68 | 6 | | | |
| 40 | 170 | 125 | 22 | 4 | M20 | 48,3 | 49,5 | 26 | 26 | 28 | 26 | — | 34 | 62 | 10 | 70 | 80 | 82 | 6 | | | |
| 50 | 195 | 145 | 26 | 4 | M24 | 60,3 | 61,5 | 28 | 28 | 30 | 28 | — | 36 | 68 | 10 | 90 | 95 | 96 | 6 | | | |
| 65 | 220 | 170 | 26 | 8 | M24 | 76,1 | 77,5 | 30 | 30 | 34 | 30 | 45 | 40 | 76 | 12 | 108 | 118 | 118 | 6 | | | |
| 80 | 230 | 180 | 26 | 8 | M24 | 88,9 | 90,5 | 34 | 32 | 36 | 32 | 60 | 44 | 78 | 12 | 120 | 130 | 128 | 8 | | | |
| 100 | 265 | 210 | 30 | 8 | M27 | 114,3 | 116,0 | 36 | 36 | 40 | 36 | 80 | 52 | 90 | 12 | 150 | 158 | 150 | 8 | | | |
| 125 | 315 | 250 | 33 | 8 | M30 | 139,7 | 141,5 | 42 | 40 | 40 | 40 | 105 | 56 | 105 | 12 | 180 | 188 | 185 | 8 | | | |
| 150 | 355 | 290 | 33 | 12 | M30 | 168,3 | 170,5 | 48 | 44 | 44 | 44 | 130 | 60 | 115 | 12 | 210 | 225 | 216 | 10 | | | |
| 200 | 430 | 360 | 36 | 12 | M33 | 219,1 | 221,5 | 60 | 52 | 52 | 52 | 180 | — | 130 | 16 | 278 | — | 278 | 10 | | | |
| 250 | 505 | 430 | 39 | 12 | M36 | 273,0 | 276,5 | 72 | 60 | 60 | 60 | 210 | — | 157 | 18 | 340 | — | 340 | 12 | | | |
| 300 | 585 | 500 | 42 | 16 | M39 | 323,9 | 327,5 | 84 | 68 | 68 | 68 | 260 | — | 170 | 18 | 400 | — | 407 | 12 | | | |
| 350 | 655 | 560 | 48 | 16 | M45 | 355,6 | 359,5 | 95 | 74 | 74 | 74 | 300 | — | 189 | 20 | 460 | — | 460 | 12 | | | |
| 400 | b | | | | | | | | | | | | | | | | | | | | | |
| 500 | b | | | | | | | | | | | | | | | | | | | | | |

See Annex A

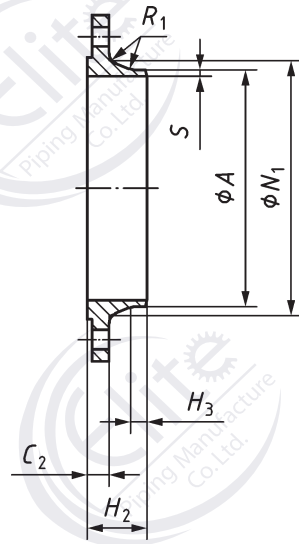
a For flanges type 21 the outside hub diameter approximately corresponds to the outside pipe diameter and the nominal value dimensions A, N₃ and R₁ and their tolerances are included for guidance only.
 b Only mating dimensions fixed, see Annex J.



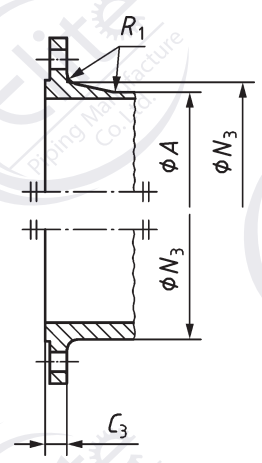
a)



b) Type 05



c) Type 11



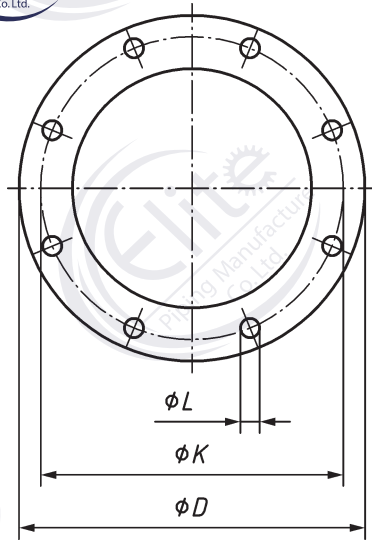
d) Type 21

Dimensions of PN 160 flanges

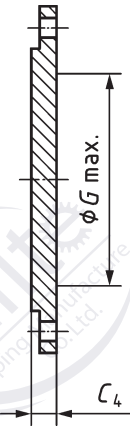
Dimensions in millimetres

| DN | Mating dimensions | | | | | Outside Diameter of neck A | Flange thickness | | | Centre portion G _{max} | Length | | Neck diameters | | Corner radii | | Wall Thickness (see 5.6.1) S |
|-----|-----------------------|------------------------------|----------------------------|---------|------|-------------------------------|------------------|----------------|----------------|------------------------------------|----------------|----------------|----------------|----------------|----------------|----|---------------------------------|
| | Outside diameter D | Diameter of bolt circle K | Diameter of bolt hole L | Bolting | | | C ₄ | C ₂ | C ₃ | | H ₂ | H ₃ | N ₁ | N ₃ | R ₁ | | |
| | | | | Number | Size | | | | | | | | | | | | |
| | Flange type | | | | | | 05 | 11 | 21 | | 05 | 11 | 11 | 11 | 21 | 11 | |
| | 05,11,21 | | | | | 11 21 ^a | 05 | 11 | 21 | 05 | 11 | 11 | 11 | 21 | 11 | 21 | 11 |
| 10 | 100 | 70 | 14 | 4 | M12 | 17,2 | 20 | 20 | 20 | — | 45 | 6 | 32 | 40 | 4 | 4 | 2,0 |
| 15 | 105 | 75 | 14 | 4 | M12 | 21,3 | 20 | 20 | 20 | — | 45 | 6 | 34 | 45 | 4 | 4 | 2,0 |
| 25 | 140 | 100 | 18 | 4 | M16 | 33,7 | 24 | 24 | 24 | — | 58 | 8 | 52 | 61 | 4 | 4 | 2,9 |
| 40 | 170 | 125 | 22 | 4 | M20 | 48,3 | 28 | 28 | 28 | — | 64 | 10 | 70 | 82 | 6 | 4 | 3,6 |
| 50 | 195 | 145 | 26 | 4 | M24 | 60,3 | 30 | 30 | 30 | — | 75 | 10 | 90 | 96 | 6 | 4 | 4,0 |
| 65 | 220 | 170 | 26 | 8 | M24 | 76,1 | 34 | 34 | 34 | 42 | 82 | 12 | 108 | 118 | 6 | 5 | 5,0 |
| 80 | 230 | 180 | 26 | 8 | M24 | 88,9 | 36 | 36 | 36 | 55 | 86 | 12 | 120 | 128 | 8 | 5 | 6,3 |
| 100 | 265 | 210 | 30 | 8 | M27 | 114,3 | 40 | 40 | 40 | 74 | 100 | 12 | 150 | 150 | 8 | 5 | 8,0 |
| 125 | 315 | 250 | 33 | 8 | M30 | 139,7 | 44 | 44 | 44 | 98 | 115 | 14 | 180 | 184 | 8 | 6 | 10,0 |
| 150 | 355 | 290 | 33 | 12 | M30 | 168,3 | 50 | 50 | 50 | 119 | 128 | 14 | 210 | 224 | 10 | 6 | 12,5 |
| 200 | 430 | 360 | 36 | 12 | M33 | 219,1 | 62 | 60 | 60 | 168 | 140 | 16 | 278 | 288 | 10 | 8 | 16,0 |
| 250 | 515 | 430 | 42 | 12 | M39 | 273,0 | 72 | 68 | 68 | 195 | 155 | 18 | 340 | 346 | 12 | 8 | 20,0 |
| 300 | 585 | 500 | 42 | 16 | M39 | 323,9 | 84 | 78 | 78 | 235 | 175 | 18 | 400 | 414 | 12 | 10 | 22,2 |

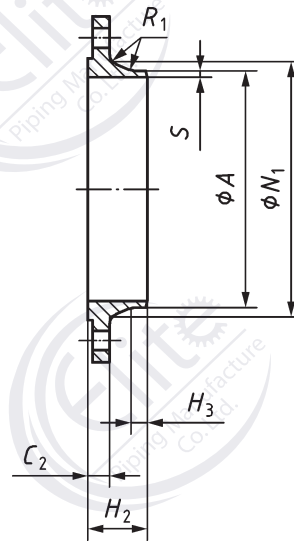
^a For flanges type 21 the outside hub diameter approximately corresponds to the outside pipe diameter and the nominal value dimensions A, N3 and R1 and their tolerances are included for guidance only.



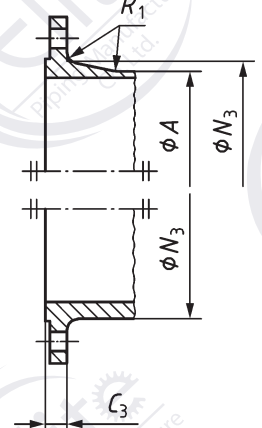
a)



b) Type 05



c) Type 11



d) Type 21

Dimensions of PN 250 flanges

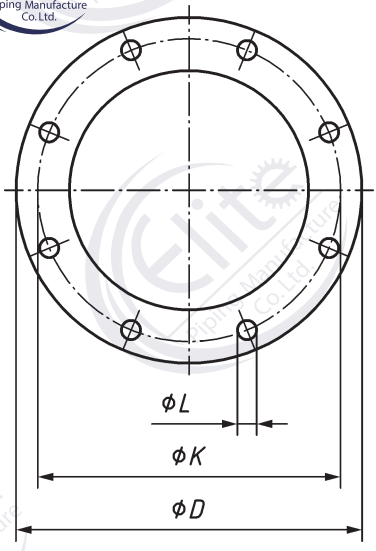
Dimensions in millimetres

| DN | Mating dimensions | | | | | Outside diameter of neck A | Flange thickness | | | Centre portion G_{max} | Length | | Neck diameters | | Corner radii | | Wall thickness (see 5.6.1) S |
|--------------------|-----------------------|------------------------------|----------------------------|---------|------|-------------------------------|------------------|-------|-------|-----------------------------|--------|-------|----------------|-------|--------------|----|---------------------------------|
| | Outside diameter D | Diameter of bolt circle K | Diameter of bolt hole L | Bolting | | | C_4 | C_2 | C_3 | | H_2 | H_3 | N_1 | N_3 | R_1 | | |
| | | | | Number | Size | | | | | | | | | | | | |
| 05, 11, 21 | | | | | | 11 21 ^a | 05 | 11 | 21 | 05 | 11 | 11 | 11 | 21 | 11 | 21 | |
| 10 ^{b, c} | 125 | 85 | 18 | 4 | M16 | — | — | — | 24 | — | — | — | — | 46 | — | 4 | — |
| 15 | 130 | 90 | 18 | 4 | M16 | 21,3 | 26 | 26 | 26 | — | 60 | 6 | 48 | 52 | 4 | 4 | 2,6 |
| 25 | 150 | 105 | 22 | 4 | M20 | 33,7 | 28 | 28 | 28 | — | 65 | 8 | 60 | 63 | 4 | 4 | 3,6 |
| 40 | 185 | 135 | 26 | 4 | M24 | 48,3 | 34 | 34 | 34 | — | 80 | 10 | 84 | 90 | 6 | 4 | 5,0 |
| 50 | 200 | 150 | 26 | 8 | M24 | 60,3 | 38 | 38 | 38 | — | 85 | 10 | 95 | 102 | 6 | 5 | 6,3 |
| 65 | 230 | 180 | 26 | 8 | M24 | 76,1 | 42 | 42 | 42 | 36 | 95 | 12 | 124 | 125 | 6 | 5 | 8,0 |
| 80 | 255 | 200 | 30 | 8 | M27 | 101,6 | 46 | 46 | 46 | 46 | 102 | 12 | 136 | 142 | 8 | 6 | 11,0 |
| 100 | 300 | 235 | 33 | 8 | M30 | 127,0 | 54 | 54 | 54 | 62 | 120 | 14 | 164 | 168 | 8 | 6 | 14,2 |
| 125 | 340 | 275 | 33 | 12 | M30 | 152,4 | 60 | 60 | 60 | 86 | 140 | 16 | 200 | 207 | 8 | 6 | 16,0 |
| 150 | 390 | 320 | 36 | 12 | M33 | 177,8 | 68 | 68 | 68 | 109 | 160 | 18 | 240 | 246 | 10 | 8 | 17,5 |
| 200 | 485 | 400 | 42 | 12 | M39 | 244,5 | 85 | 82 | 82 | 150 | 190 | 25 | 305 | 314 | 10 | 8 | 25,0 |
| 250 | 585 | 490 | 48 | 16 | M45 | 298,5 | 104 | 100 | 100 | 171 | 215 | 30 | 385 | 394 | 12 | 10 | 32,0 |
| 300 ^b | 690 | 590 | 52 | 16 | M48 | — | — | — | 120 | — | — | — | — | 480 | — | 10 | — |

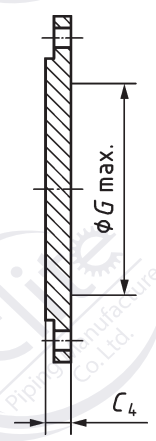
^a For flanges type 21 the outside hub diameter approximately corresponds to the outside pipe diameter and the nominal value dimensions A, N3 and R1 and their tolerances are included for guidance only.

^b For flanges type 21.

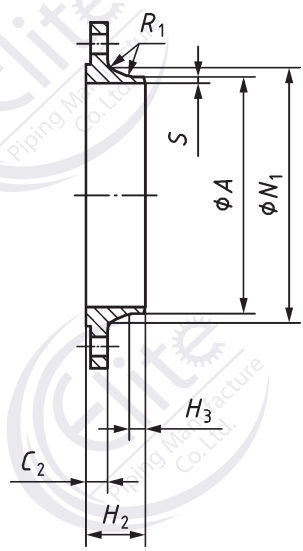
^c For flanges type 11 use flanges PN 320.



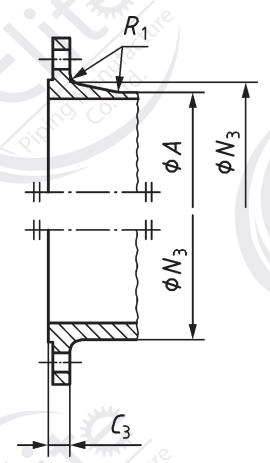
a)



b) Type 05



c) Type 11



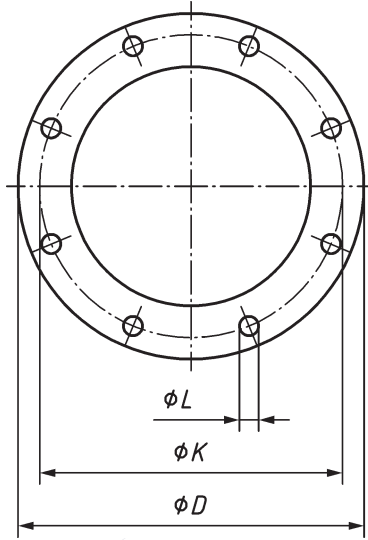
d) Type 21

Dimensions of PN 320 flanges

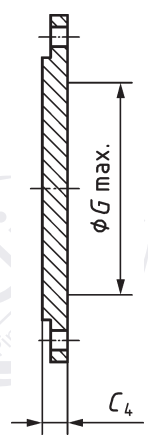
Dimensions in millimetres

| DN | Mating dimensions | | | | | Outside diameter of neck A | Flange thickness | | | Centre portion G _{max} | Length | | Neck diameters | | Corner radii | | Wall thickness (see 5.6.1) S |
|-----|-----------------------|------------------------------|----------------------------|---------|------|-------------------------------|------------------|----------------|----------------|------------------------------------|----------------|----------------|----------------|----------------|----------------|----|------------------------------------|
| | Outside diameter D | Diameter of bolt circle K | Diameter of bolt hole L | Bolting | | | C ₄ | C ₂ | C ₃ | | H ₂ | H ₃ | N ₁ | N ₃ | R ₁ | | |
| | | | | Number | Size | | | | | | | | | | | | |
| | Flange type | | | | | | | | | | | | | | | | |
| | 05, 11, 21 | | | | | 11 21 ^a | 05 | 11 | 21 | 05 | 11 | 11 | 11 | 21 | 11 | 21 | 11 |
| 10 | 125 | 85 | 18 | 4 | M16 | 17,2 | 24 | 24 | 24 | — | 58 | 6 | 44 | 46 | 4 | 4 | 2,6 |
| 15 | 130 | 90 | 18 | 4 | M16 | 21,3 | 26 | 26 | 26 | — | 60 | 6 | 48 | 52 | 4 | 4 | 3,2 |
| 25 | 160 | 115 | 22 | 4 | M20 | 33,7 | 34 | 34 | 34 | — | 78 | 8 | 68 | 72 | 4 | 4 | 5,0 |
| 40 | 195 | 145 | 26 | 4 | M24 | 48,3 | 38 | 38 | 38 | — | 88 | 10 | 92 | 96 | 6 | 5 | 6,3 |
| 50 | 210 | 160 | 26 | 8 | M24 | 63,5 | 42 | 42 | 42 | — | 100 | 10 | 106 | 110 | 6 | 5 | 8,0 |
| 65 | 255 | 200 | 30 | 8 | M27 | 88,9 | 51 | 51 | 51 | — | 120 | 12 | 138 | 137 | 6 | 6 | 11,0 |
| 80 | 275 | 220 | 30 | 8 | M27 | 101,6 | 55 | 55 | 55 | 43 | 130 | 14 | 156 | 160 | 8 | 6 | 12,5 |
| 100 | 335 | 265 | 36 | 8 | M33 | 133,0 | 65 | 65 | 65 | 58 | 145 | 16 | 186 | 190 | 8 | 8 | 16,0 |
| 125 | 380 | 310 | 36 | 12 | M33 | 168,3 | 75 | 75 | 75 | 78 | 175 | 20 | 230 | 235 | 8 | 8 | 20,0 |
| 150 | 425 | 350 | 39 | 12 | M36 | 193,7 | 84 | 84 | 84 | 94 | 195 | 25 | 265 | 266 | 10 | 10 | 25,0 |
| 200 | 525 | 440 | 42 | 16 | M39 | 244,5 | 103 | 103 | 103 | 140 | 235 | 30 | 345 | 350 | 10 | 10 | 30,0 |
| 250 | 640 | 540 | 52 | 16 | M48 | 323,9 | 125 | 125 | 125 | 190 | 300 | 40 | 428 | 432 | 12 | 10 | 40,0 |

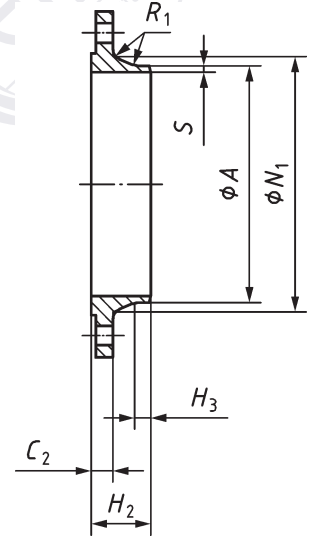
^a For flanges type 21 the outside hub diameter approximately corresponds to the outside pipe diameter and the nominal value dimensions A, N3 and R1 and their tolerances are included for guidance only.



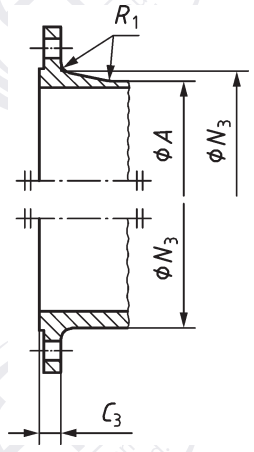
a)



b) Type 05



c) Type 11



d) Type 21

Dimensions of PN 400 flanges

Dimensions in millimetres

| DN | Mating dimensions | | | | | Outside diameter of neck A | Flange thickness | | | Centre portion G _{max} | Length | | Neck diameters | | Corner radii | | Wall thickness (see 5.6.1) S |
|------------|-----------------------|------------------------------|----------------------------|---------|------|-------------------------------|------------------|----------------|----------------|------------------------------------|----------------|----------------|----------------|----------------|----------------|----------------|------------------------------------|
| | Outside diameter D | Diameter of bolt circle K | Diameter of bolt hole L | Bolting | | | C ₄ | C ₂ | C ₃ | | H ₂ | H ₃ | N ₁ | N ₃ | R ₁ | R ₂ | |
| | | | | Number | Size | | | | | | | | | | | | |
| | Flange type | | | | | | | | | | | | | | | | |
| 05, 11, 21 | | | | | | 11 21 ^a | 05 | 11 | 21 | 05 | 11 | 11 | 11 | 21 | 11 | 21 | |
| 10 | 125 | 85 | 18 | 4 | M16 | 17,2 | 28 | 28 | 28 | — | 65 | 8 | 48 | 48 | 4 | 4 | 3,6 |
| 15 | 145 | 100 | 22 | 4 | M20 | 26,9 | 30 | 30 | 30 | — | 68 | 8 | 56 | 57 | 4 | 4 | 5,0 |
| 25 | 180 | 130 | 26 | 4 | M24 | 42,4 | 38 | 38 | 38 | — | 90 | 10 | 82 | 81 | 4 | 5 | 7,1 |
| 40 | 220 | 165 | 30 | 4 | M27 | 60,3 | 48 | 48 | 48 | — | 110 | 12 | 106 | 105 | 6 | 5 | 10,0 |
| 50 | 235 | 180 | 30 | 8 | M27 | 76,1 | 52 | 52 | 52 | — | 120 | 15 | 120 | 120 | 6 | 6 | 12,5 |
| 65 | 290 | 225 | 33 | 8 | M30 | 101,6 | 64 | 64 | 64 | — | 135 | 18 | 158 | 158 | 6 | 6 | 16,0 |
| 80 | 305 | 240 | 33 | 8 | M30 | 114,3 | 68 | 68 | 68 | — | 150 | 20 | 174 | 174 | 8 | 8 | 17,5 |
| 100 | 370 | 295 | 39 | 8 | M36 | 139,7 | 80 | 80 | 80 | 46 | 175 | 25 | 216 | 216 | 8 | 8 | 22,2 |
| 125 | 415 | 340 | 39 | 12 | M36 | 193,7 | 92 | 92 | 92 | 58 | 200 | 30 | 258 | 259 | 8 | 10 | 30,0 |
| 150 | 475 | 390 | 42 | 12 | M39 | 219,1 | 105 | 105 | 105 | 74 | 225 | 35 | 302 | 302 | 10 | 10 | 35,0 |
| 200 | 585 | 490 | 48 | 16 | M45 | 273,0 | 130 | 130 | 130 | 120 | 280 | 40 | 388 | 388 | 10 | 10 | 40,0 |

^a For flanges type 21 the outside hub diameter approximately corresponds to the outside pipe diameter and the nominal value dimensions A, N3 and R1 and their tolerances are included for guidance only.

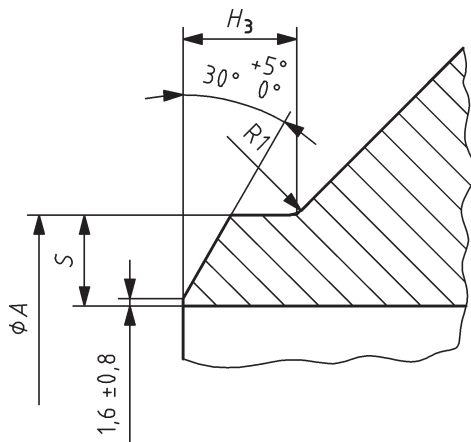
Annex A (normative)

Wall thickness and end preparation for flanges type 11, 34, 35, 36, 37 and pipe nominal thicknesses for the use with type 01 flanges

A.1 Weld-end preparation for flanges types 11 and 34

Unless otherwise specified, for flanges in accordance with this European Standard the welding end connections given in Figures A.1 to A.3 shall be used. Additional types of welding ends are specified in EN ISO 9692-2 and examples of designs in EN 1708-1 and may be used by agreement between the component or pressure equipment manufacturer and the flange manufacturer.

- Wall thickness $S \leq 3$ mm: Flanges/collars may be delivered with square cut ends.
- Wall thickness $3 < S < 22$: Bevelled ends with an angle of $30^\circ \begin{smallmatrix} +5^\circ \\ -0^\circ \end{smallmatrix}$ and root face of $(1,6 \pm 0,8)$ mm.
- If flange wall thickness (S) > pipe wall thickness (T), the inner diameter shall be chamfered with an angle of $15^\circ \begin{smallmatrix} +5^\circ \\ -0^\circ \end{smallmatrix}$ to match (see Figure A.3).

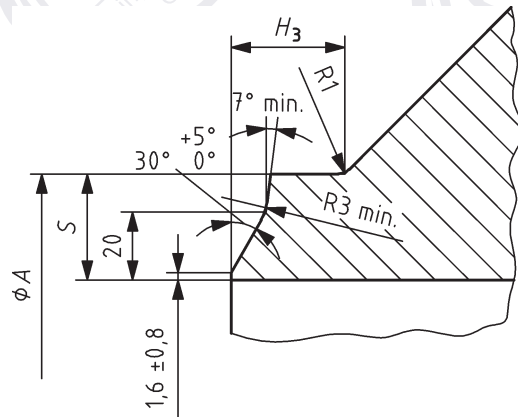


Key

S flange wall thickness

Figure A.1 — Welding end connection for wall thickness $S < 22,2$ mm

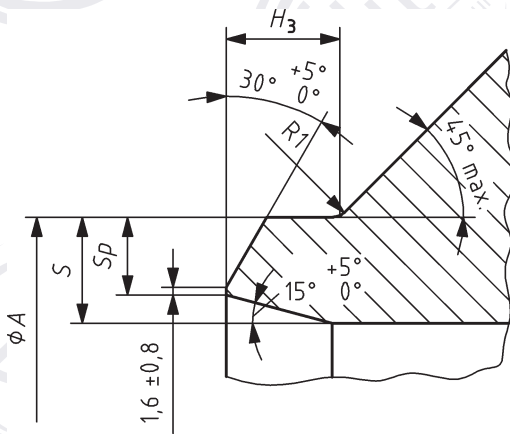
Dimensions in millimetres



Key

S flange wall thickness

Figure A.2 — Welding end connection for wall thickness $S \geq 22,2$ mm



Key

S flange wall thickness

Sp reduced flange wall thickness

Figure A.3 — Permissible bevel design for unequal wall thickness

For flanges required to connect to non-austenitic steel pipe of nominal wall thickness less than 4,8 mm, the welding ends should be finished to a slight chamfer or be square, at the option of the flange manufacturer, if nothing else has been agreed between flange manufacturer and purchaser or pressure equipment manufacturer.

For flanges required to connect to austenitic stainless steel pipe of nominal wall thickness 3,2 mm or less, the welding ends should be square cut ends.

The mating wall thickness of the flange (Sp) shall match to the pipe wall thickness (T).

Table A.1 — Wall thickness for type 11

| φ A | PN 2,5 | | PN 6 | | PN 10 | | PN 16 | | PN 25 | | PN 40 | | PN 63 | | PN 100 | |
|-------|--------|-----|------|-----|-------|-----|-------|-----|-------|-----|-------|-----|-------|------|--------|------|
| | S | Sp | S | Sp | S | Sp | S | Sp | S | Sp | S | Sp | S | Sp | S | Sp |
| 17,2 | 2,0 | 2,0 | 2,0 | 2,0 | 2,0 | 2,0 | 2,0 | 2,0 | 2,0 | 2,0 | 2,0 | 2,0 | 2,0 | 2,0 | 2,0 | 2,0 |
| 21,3 | 2,0 | 2,0 | 2,0 | 2,0 | 2,0 | 2,0 | 2,0 | 2,0 | 2,0 | 2,0 | 2,0 | 2,0 | 2,0 | 2,0 | 2,0 | 2,0 |
| 26,9 | 2,3 | 2,3 | 2,3 | 2,3 | 2,3 | 2,3 | 2,3 | 2,3 | 2,3 | 2,3 | 2,3 | 2,3 | 2,6 | 2,6 | 2,6 | 2,6 |
| 33,7 | 2,6 | 2,6 | 2,6 | 2,6 | 2,6 | 2,6 | 2,6 | 2,6 | 2,6 | 2,6 | 2,6 | 2,6 | 2,6 | 2,6 | 2,6 | 2,6 |
| 42,4 | 2,6 | 2,6 | 2,6 | 2,6 | 2,6 | 2,6 | 2,6 | 2,6 | 2,6 | 2,6 | 2,6 | 2,6 | 2,9 | 2,9 | 2,9 | 2,9 |
| 48,3 | 2,6 | 2,6 | 2,6 | 2,6 | 2,6 | 2,6 | 2,6 | 2,6 | 2,6 | 2,6 | 2,6 | 2,6 | 2,9 | 2,9 | 2,9 | 2,9 |
| 60,3 | 2,9 | 2,9 | 2,9 | 2,9 | 2,9 | 2,9 | 2,9 | 2,9 | 2,9 | 2,9 | 2,9 | 2,9 | 2,9 | 2,9 | 3,2 | 3,2 |
| 76,1 | 2,9 | 2,9 | 2,9 | 2,9 | 2,9 | 2,9 | 2,9 | 2,9 | 2,9 | 2,9 | 2,9 | 2,9 | 3,2 | 3,2 | 3,6 | 3,6 |
| 88,9 | 3,2 | 3,2 | 3,2 | 3,2 | 3,2 | 3,2 | 3,2 | 3,2 | 3,2 | 3,2 | 3,2 | 3,2 | 3,6 | 3,6 | 4,0 | 4,0 |
| 114,3 | 3,6 | 3,6 | 3,6 | 3,6 | 3,6 | 3,6 | 3,6 | 3,6 | 3,6 | 3,6 | 3,6 | 3,6 | 4,0 | 4,0 | 5,0 | 5,0 |
| 139,7 | 4,0 | 4,0 | 4,0 | 4,0 | 4,0 | 4,0 | 4,0 | 4,0 | 4,0 | 4,0 | 4,0 | 4,0 | 4,5 | 4,5 | 6,3 | 6,3 |
| 168,3 | 4,5 | 4,5 | 4,5 | 4,5 | 4,5 | 4,5 | 4,5 | 4,5 | 4,5 | 4,5 | 4,5 | 4,5 | 5,6 | 5,6 | 7,1 | 7,1 |
| 219,1 | 6,3 | 6,3 | 6,3 | 6,3 | 6,3 | 6,3 | 6,3 | 6,3 | 6,3 | 6,3 | 6,3 | 6,3 | 7,1 | 7,1 | 10,0 | 10,0 |
| 273 | 6,3 | 6,3 | 6,3 | 6,3 | 6,3 | 6,3 | 6,3 | 6,3 | 7,1 | 7,1 | 7,1 | 7,1 | 8,8 | 8,8 | 12,5 | 12,5 |
| 323,9 | 7,1 | 7,1 | 7,1 | 7,1 | 7,1 | 7,1 | 7,1 | 7,1 | 8,0 | 8,0 | 8,0 | 8,0 | 11,0 | 11,0 | 14,2 | 14,2 |

| Ø A | PN 2,5 | | PN 6 | | PN 10 | | PN 16 | | PN 25 | | PN 40 | | PN 63 | | PN 100 | |
|-------|--------|-----|------|------|-------|------|-------|------|-------|------|-------|------|-------|------|--------|------|
| | S | Sp | S | Sp | S | Sp | S | Sp | S | Sp | S | Sp | S | Sp | S | Sp |
| 355,6 | 7,1 | 7,1 | 7,1 | 7,1 | 7,1 | 7,1 | 8,0 | 8,0 | 8,0 | 8,0 | 8,8 | 8,8 | 12,5 | 12,5 | 16,0 | 16,0 |
| 406,4 | 7,1 | 7,1 | 7,1 | 7,1 | 7,1 | 7,1 | 8,0 | 8,0 | 8,8 | 8,8 | 11,0 | 11,0 | 14,2 | 14,2 | | |
| 457 | 7,1 | 7,1 | 7,1 | 7,1 | 7,1 | 7,1 | 8,8 | 8,0 | 8,8 | 8,8 | 12,5 | 12,5 | | | | |
| 508 | 7,1 | 7,1 | 7,1 | 7,1 | 7,1 | 7,1 | 8,8 | 8,0 | 10,0 | 10,0 | 14,2 | 14,2 | | | | |
| 610 | 7,1 | 7,1 | 7,1 | 7,1 | 8 | 7,1 | 11,0 | 8,8 | 12,5 | 11,0 | 16,0 | 16,0 | | | | |
| 711 | 7,1 | 7,1 | 8 | 7,1 | 8,8 | 8,0 | 11,0 | 8,8 | 14,2 | 12,5 | | | | | | |
| 813 | 7,1 | 7,1 | 8 | 7,1 | 8,8 | 8,0 | 12,5 | 10,0 | 16 | 14,2 | | | | | | |
| 914 | 7,1 | 7,1 | 8 | 7,1 | 12,5 | 10,0 | 12,5 | 10,0 | 17,5 | 16,0 | | | | | | |
| 1 016 | 7,1 | 7,1 | 8 | 7,1 | 12,5 | 10 | 12,5 | 10 | 20 | 17,5 | | | | | | |
| 1 219 | 8 | 7,1 | 8,8 | 8 | 12,5 | 11 | 14,2 | 12,5 | | | | | | | | |
| 1 422 | 8 | 7,1 | 8,8 | 8 | 14,2 | 12,5 | 16 | 14,2 | | | | | | | | |
| 1 626 | 8,8 | 8 | 10 | 9 | 16 | 14,2 | 17,5 | 16 | | | | | | | | |
| 1 829 | 10 | 10 | 11 | 10 | 17,5 | 16 | 20 | 17,5 | | | | | | | | |
| 2 032 | 11 | 10 | 12,5 | 11 | 17,5 | 16 | 22 | 20 | | | | | | | | |
| 2 235 | 11 | 10 | 14 | 12,5 | 20 | 18 | | | | | | | | | | |
| 2 438 | 11 | 10 | 15 | 14,2 | 22,2 | 20 | | | | | | | | | | |
| 2 620 | 11 | 10 | 16 | 14,2 | 25 | 22,2 | | | | | | | | | | |
| 2 820 | 11 | 10 | 17 | 16 | 25 | 22,2 | | | | | | | | | | |
| 3 020 | 11 | 10 | 20 | 16 | 32 | 24 | | | | | | | | | | |
| 3 220 | 11 | 10 | 20 | 16 | | | | | | | | | | | | |
| 3 420 | 11 | 10 | 22 | 17,5 | | | | | | | | | | | | |
| 3 620 | 11 | 10 | 22 | 17,5 | | | | | | | | | | | | |
| 3 820 | 11 | 10 | | | | | | | | | | | | | | |
| 4 020 | 11 | 10 | | | | | | | | | | | | | | |

Sp valves should match the values given in EN 10220 and accordingly EN ISO 1127.

A.2 Weld-end preparation for type 35

Dimensions: see Table A.2.

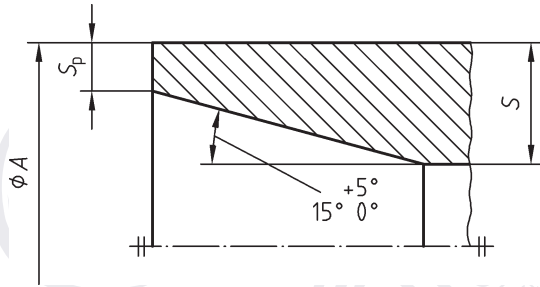


Figure A.4 — Chamfer A for type 35

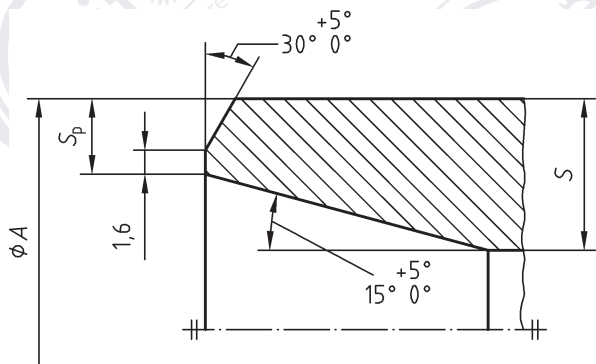


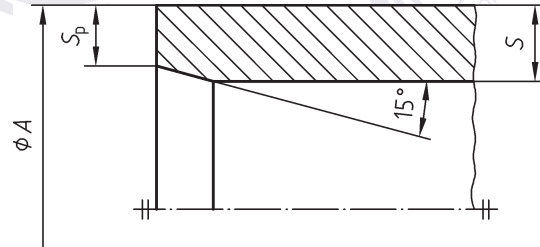
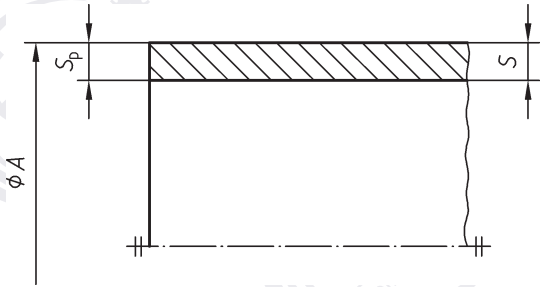
Figure A.5 — Chamfer B for type 35

Table A.2 — Wall thickness for type 35

| ϕA | PN 2,5 | | PN 6 | | PN 10 | | PN 16 | | PN 25 | | PN 40 | | Chamfer |
|----------|--------|-----|------|-----|-------|-----|-------|-----|-------|------|-------|-----|---------|
| | S | Sp | S | Sp | S | Sp | S | Sp | S | Sp | S | Sp | |
| 17,2 | 3 | 2 | 3 | 2 | 3 | 2 | 3 | 2 | 3 | 2 | 3 | 2 | A |
| 21,3 | 3 | 2 | 3 | 2 | 3 | 2 | 3 | 2 | 3 | 2 | 3 | 2 | |
| 26,9 | 3 | 2 | 3 | 2 | 3 | 2 | 3 | 2 | 3 | 2 | 3 | 2 | |
| 33,7 | 3 | 2 | 3 | 2 | 3 | 2 | 3 | 2 | 3 | 2 | 3 | 2 | |
| 42,4 | 3 | 2 | 3 | 2 | 3 | 2 | 3 | 2 | 3 | 2 | 3 | 2 | |
| 48,3 | 3 | 2 | 3 | 2 | 3 | 2 | 3 | 2 | 3 | 2 | 3 | 2 | |
| 60,3 | 3 | 2 | 3 | 2 | 3 | 2 | 3 | 2 | 4 | 2,6 | 4 | 2,6 | |
| 76,1 | 4 | 2 | 4 | 2 | 4 | 2 | 4 | 2 | 5 | 2,6 | 5 | 2,6 | |
| 88,9 | 4 | 2 | 4 | 2 | 4 | 2 | 4 | 2 | 6 | 2,6 | 6 | 2,6 | |
| 114,3 | 4 | 2 | 4 | 2 | 4 | 2 | 4 | 2 | 6 | 3,2 | 6 | 3,2 | |
| 139,7 | 5 | 2 | 5 | 2 | 5 | 2 | 5 | 2 | 6 | 3,2 | 6 | 3,2 | |
| 168,3 | 6 | 2 | 6 | 2 | 6 | 2 | 6 | 2 | 8 | 3,2 | 8 | 4 | B |
| 219,1 | 6 | 2,6 | 6 | 2,6 | 6 | 2,6 | 6 | 2,6 | 8 | 3,2 | 10 | 5 | |
| 273 | 8 | 3,2 | 8 | 3,2 | 8 | 3,2 | 8 | 3,2 | 10 | 5 | 12 | 6,3 | |
| 323,9 | 8 | 3,2 | 8 | 3,2 | 8 | 3,2 | 10 | 4 | 10 | 6,3 | 12 | 8 | |
| 355,6 | 8 | 3,2 | 8 | 3,2 | 8 | 3,2 | 10 | 4 | 12 | 6,3 | 14 | 8 | |
| 406,4 | 8 | 3,2 | 8 | 3,2 | 8 | 3,2 | 12 | 5 | 14 | 8 | 16 | 10 | |
| 457 | 8 | 3,6 | 8 | 3,6 | 8 | 3,6 | 12 | 5 | 15 | 8 | | | |
| 508 | 8 | 4 | 8 | 4 | 8 | 4 | 12 | 6,3 | 16 | 10 | | | |
| 610 | 8 | 5 | 8 | 5 | 10 | 5 | 12 | 8 | 18 | 10 | | | |
| 711 | 8 | 5 | 8 | 5 | 10 | 6,3 | 14 | 8 | 20 | 14,2 | | | |
| 813 | 10 | 6,3 | 10 | 6,3 | 12 | 6,3 | 16 | 10 | 20 | 14,2 | | | |
| 914 | 10 | 6,3 | 10 | 6,3 | 12 | 8 | 18 | 10 | | | | | |
| 1 016 | 12 | 8 | 12 | 8 | 12 | 8 | 18 | 10 | | | | | |
| 1 219 | 14 | 10 | 14 | 10 | 16 | 10 | | | | | | | |

A.3 Weld end preparation for types 36 and 37

Dimensions: see Table A.3.



Tolerance of angle: $+5^\circ$
 -0°

Figure A.6 — Chamfer A for types 36 and 37

Figure A.7 — Chamfer B for types 36 and 37

Table A.3 — Wall thickness for types 36 and 37

| ϕA | PN 2,5 to PN 10 | | | | PN 16 | | | | Chamfer |
|----------|-----------------|-------|---------|-------|---------|-------|---------|-------|---------|
| | Type 36 | | Type 37 | | Type 36 | | Type 37 | | |
| | S | S_p | S | S_p | S | S_p | S | S_p | |
| 17,2 | 2 | 2 | 2 | 2 | 2 | 2 | 2 | 2 | A |
| 21,3 | 2 | 2 | 2 | 2 | 2 | 2 | 2 | 2 | |
| 26,9 | 2,6 | 2,6 | 2 | 2 | 2,6 | 2,6 | 2 | 2 | |
| 33,7 | 2,6 | 2,6 | 2 | 2 | 2,6 | 2,6 | 2 | 2 | |
| 42,4 | 3,2 | 3,2 | 2 | 2 | 3,2 | 3,2 | 2 | 2 | |
| 48,3 | 3,2 | 3,2 | 2 | 2 | 3,2 | 3,2 | 2 | 2 | |
| 60,3 | 3,2 | 3,2 | 2 | 2 | 3,2 | 3,2 | 2 | 2 | |
| 76,1 | 3,2 | 3,2 | 2 | 2 | 3,2 | 3,2 | 2 | 2 | |
| 88,9 | 3,2 | 3,2 | 2 | 2 | 3,2 | 3,2 | 2 | 2 | |
| 114,3 | 3,2 | 3,2 | 3,2 | 3,2 | 3,2 | 3,2 | 3,2 | 3,2 | |
| 139,7 | 4 | 3,2 | 3,2 | 3,2 | 4 | 3,2 | 3,5 | 3,2 | B |
| 168,3 | 5 | 3,2 | 3,5 | 3,2 | 5 | 3,2 | 4,5 | 3,2 | |
| 219,1 | 5 | 3,2 | 4,5 | 3,2 | 6 | 3,2 | 5,6 | 3,2 | |
| 273 | 8 | 3,2 | | | 10 | 3,2 | | | |
| 323,9 | 8 | 3,2 | | | 10 | 4b | | | |
| 355,6 | 8 | 3,2 | | | 10 | 4b | | | |
| 406,4 | 8 | 3,2 | | | 10 | 4b | | | |
| 457 | 8a | 3,2a | | | | | | | |
| 508a | 8a | 3,2a | | | | | | | |

a These values are valid only for PN 2,5 and PN 6.

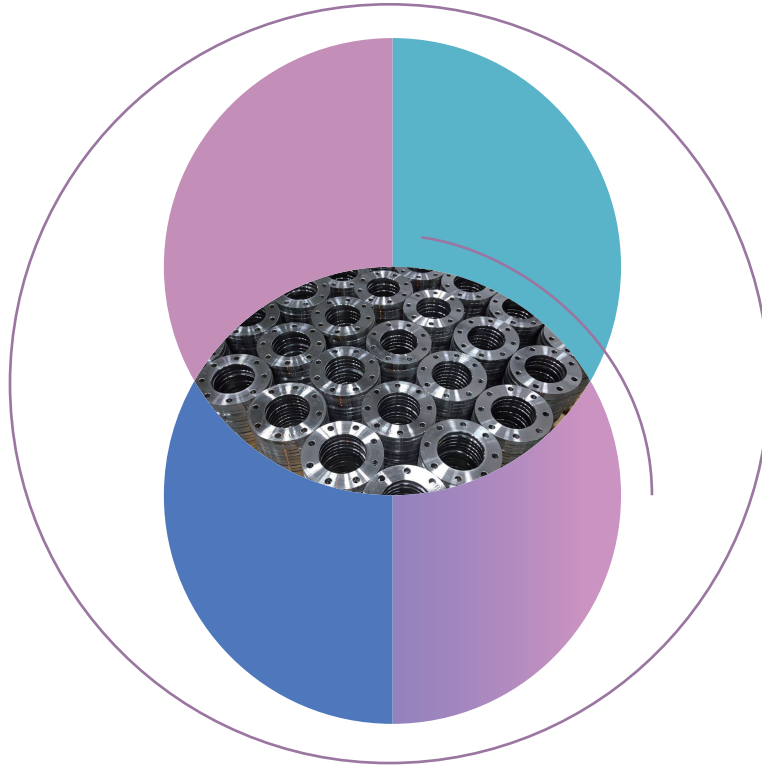
b Like chamfer B for Type 35.

Table A.4 — Pipe nominal thicknesses (T) to be used with Type 01 Plate Flanges (not for stainless steels)

(1 mm corrosion allowance included)

| $\varnothing A$ | PN2,5 T | PN6 T | PN 10 T | PN 16 T | PN 25 T | PN 40 T | PN 63 T | PN 100 T |
|-----------------|---------|-------|---------|---------|---------|---------|---------|----------|
| 17,2 | 2 | 2 | 2 | 2 | 2 | 2 | 3,2 | 3,2 |
| 21,3 | 2 | 2 | 2 | 2 | 2 | 2 | 3,2 | 3,2 |
| 26,9 | 2,3 | 2,3 | 2,3 | 2,3 | 2,3 | 2,3 | 3,6 | 3,6 |
| 33,7 | 2,6 | 2,6 | 2,6 | 2,6 | 2,6 | 2,6 | 3,6 | 3,6 |
| 42,4 | 2,6 | 2,6 | 2,6 | 2,6 | 2,6 | 2,6 | 3,6 | 3,6 |
| 48,3 | 2,6 | 2,6 | 2,6 | 2,6 | 2,6 | 2,6 | 4 | 4 |
| 60,3 | 2,9 | 2,9 | 2,9 | 2,9 | 2,9 | 2,9 | 4 | 4 |
| 76,1 | 2,9 | 2,9 | 2,9 | 2,9 | 2,9 | 2,9 | 4 | 4,5 |
| 88,9 | 3,2 | 3,2 | 3,2 | 3,2 | 3,2 | 3,2 | 4,5 | 5 |
| 114,3 | 3,2 | 3,2 | 3,2 | 3,2 | 3,6 | 3,6 | 4,5 | 5,6 |
| 139,7 | 3,2 | 3,2 | 3,2 | 3,2 | 4 | 4 | 5 | 6,3 |
| 168,3 | 3,2 | 3,2 | 3,2 | 3,2 | 4 | 4 | 5,6 | 7,1 |
| 219,1 | 3,6 | 3,6 | 3,6 | 3,6 | 4,5 | 6,3 | 7,1 | 10 |
| 273 | 4 | 4 | 4,5 | 4,5 | 6,3 | 7,1 | 8,8 | 12,5 |
| 323,9 | 4 | 4 | 4,5 | 5 | 7,1 | 8 | 11 | 14,2 |
| 355,6 | 4 | 4 | 4,5 | 5 | 7,1 | 8,8 | 12,5 | 16 |
| 406,4 | 4 | 4 | 4,5 | 6,3 | 8,8 | 11 | 14,2 | — |
| 457 | 4,5 | 4,5 | 4,5 | 6,3 | 8,8 | — | — | — |
| 508 | 5,6 | 5,6 | 5,6 | 7,1 | 10 | — | — | — |
| 610 | 6,3 | 6,3 | 6,3 | 8,8 | 11 | — | — | — |
| 711 | 6,3 | 6,3 | 7,1 | 8,8 | 12,5 | — | — | — |
| 813 | 7,1 | 7,1 | 7,1 | 10 | 14,2 | — | — | — |
| 914 | 7,1 | 7,1 | 8,8 | 10 | — | — | — | — |
| 1016 | 7,1 | 7,1 | 8,8 | 10 | — | — | — | — |
| 1219 | 7,1 | 8 | 11 | — | — | — | — | — |
| 1422 | — | 8 | — | — | — | — | — | — |
| 1626 | — | 9 | — | — | — | — | — | — |
| 1829 | — | 10 | — | — | — | — | — | — |
| 2032 | — | 11 | — | — | — | — | — | — |

For stainless steels, the nominal thickness should be specified by the purchaser.



Elite Piping Manufacture Co.,Ltd
E-mail:info@elitepiping.com
<https://eliteflange.com>
Tel:+8618618291381