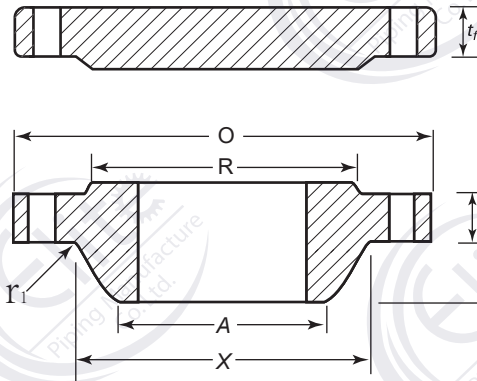




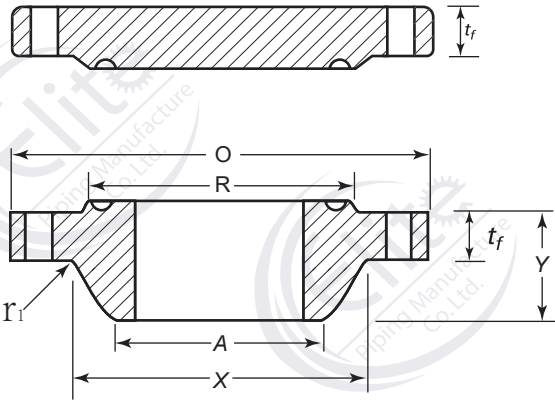
Large Diameter Steel Flanges
NPS 26 Through NPS 60
Metric Standard

Dimensions of Class 150 Series A Flanges

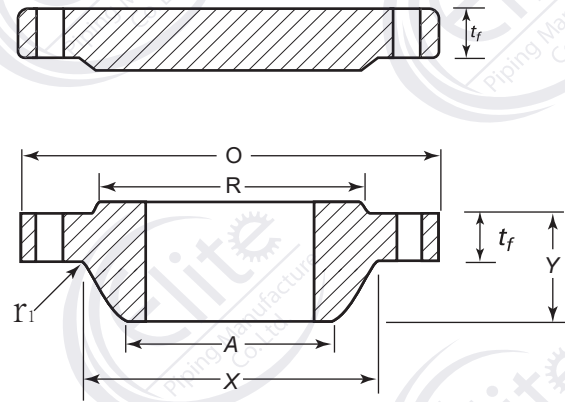


Nominal Pipe Size	O.D. of Flange, O	Minimum Thickness of Flange, t_f		Length Through Hub, Y	Diam. of Hub, X	Hub Diam. Top, A	Raised Face Diam., R	Drilling			Diam. of Bolt, in.	Minimum Fillet Radius, r_1	Length of Bolts, L
		WNF	Blind					Diam. of Bolt Circle	No. of Bolt Holes	Diam. of Bolt Hole, in.			
													Raised Face 1.6 mm
26	870	66.8	66.8	119	676	660.4	749	806.4	24	1 ³ / ₈	1 ¹ / ₄	10	225
28	927	69.8	69.8	124	727	711.2	800	863.6	28	1 ³ / ₈	1 ¹ / ₄	11	230
30	984	73.2	73.2	135	781	762.0	857	914.4	28	1 ³ / ₈	1 ¹ / ₄	11	235
32	1060	79.5	79.5	143	832	812.8	914	977.9	28	1 ⁵ / ₈	1 ¹ / ₂	11	265
34	1111	81.0	81.0	148	883	863.6	965	1028.7	32	1 ⁵ / ₈	1 ¹ / ₂	13	270
36	1168	88.9	88.9	156	933	914.4	1022	1085.8	32	1 ⁵ / ₈	1 ¹ / ₂	13	285
38	1238	85.9	85.9	156	991	965.2	1073	1149.4	32	1 ⁵ / ₈	1 ¹ / ₂	13	280
40	1289	88.9	88.9	162	1041	1016.0	1124	1200.2	36	1 ⁵ / ₈	1 ¹ / ₂	13	285
42	1346	95.2	95.2	170	1092	1066.8	1194	1257.3	36	1 ⁵ / ₈	1 ¹ / ₂	13	300
44	1403	100.1	100.1	176	1143	1117.6	1245	1314.4	40	1 ⁵ / ₈	1 ¹ / ₂	13	305
46	1454	101.6	101.6	184	1197	1168.4	1295	1365.2	40	1 ⁵ / ₈	1 ¹ / ₂	13	310
48	1511	106.4	106.4	191	1248	1219.2	1359	1422.4	44	1 ⁵ / ₈	1 ¹ / ₂	13	320
50	1568	109.7	109.7	202	1302	1270.0	1410	1479.6	44	1 ⁷ / ₈	1 ³ / ₄	13	340
52	1626	114.3	114.3	208	1353	1320.8	1461	1536.7	44	1 ⁷ / ₈	1 ³ / ₄	13	350
54	1683	119.1	119.1	214	1403	1371.6	1511	1593.8	44	1 ⁷ / ₈	1 ³ / ₄	13	360
56	1746	122.4	122.4	227	1457	1422.4	1575	1651.0	48	1 ⁷ / ₈	1 ³ / ₄	13	365
58	1803	127.0	127.0	233	1508	1473.2	1626	1708.2	48	1 ⁷ / ₈	1 ³ / ₄	13	380
60	1854	130.3	130.3	238	1559	1524.0	1676	1759.0	52	1 ⁷ / ₈	1 ³ / ₄	13	380

Dimensions of Class 300 Series A Flanges



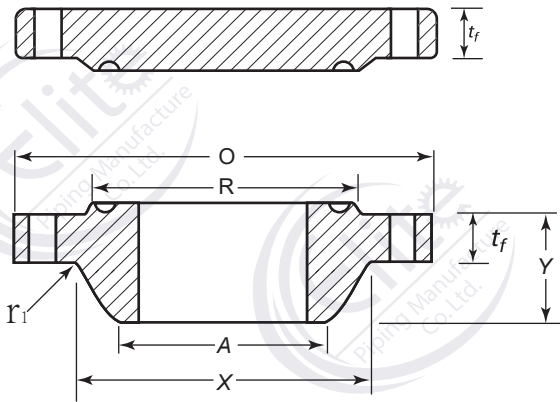
Ring Joint



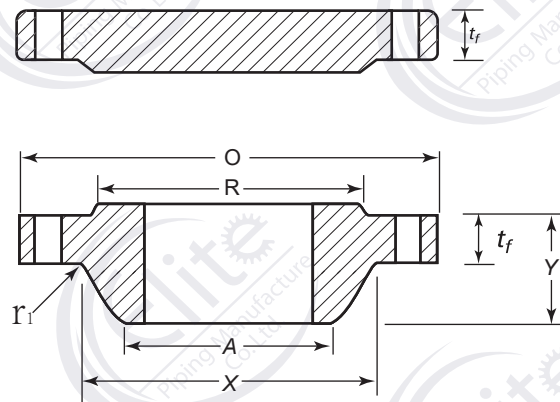
Raised Face

Nominal Pipe Size	O.D. of Flange, O	Minimum Thickness of Flange, t_f		Length Through Hub, Y	Diam. of Hub, X	Hub Diam. Top, A	Raised Face Diam., R	Drilling				Minimum Fillet Radius, r_1	Length of Bolts, L	
		WNF	Blind					Diam. of Bolt Circle	No. of Bolt Holes	Diam. of Bolt Hole, in.	Diam. of Bolt, in.		Stud Bolts	
													Raised Face 1.6 mm	Ring Joint
26	972	78.0	82.6	183	721	660.4	749	876.3	28	1 ³ / ₄	1 ⁵ / ₈	10	270	290
28	1035	84.3	88.9	195	775	711.2	800	939.8	28	1 ³ / ₄	1 ⁵ / ₈	11	280	300
30	1092	90.7	93.7	208	827	762.0	857	997.0	28	1 ⁷ / ₈	1 ³ / ₄	11	300	320
32	1149	97.0	98.6	221	881	812.8	914	1054.1	28	2	1 ⁷ / ₈	11	320	345
34	1206	100.1	103.4	230	937	863.6	965	1104.9	28	2	1 ⁷ / ₈	13	330	350
36	1270	103.4	109.7	240	991	914.4	1022	1168.4	32	2 ¹ / ₈	2	13	340	365
38	1168	106.4	106.4	179	994	965.2	1029	1092.2	32	1 ⁵ / ₈	1 ¹ / ₂	13	320	...
40	1238	112.8	112.8	192	1048	1016.0	1086	1155.7	32	1 ³ / ₄	1 ⁵ / ₈	13	340	...
42	1289	117.6	117.6	199	1099	1066.8	1137	1206.5	32	1 ³ / ₄	1 ⁵ / ₈	13	350	...
44	1353	122.4	122.4	205	1149	1117.6	1194	1263.6	32	1 ⁷ / ₈	1 ³ / ₄	13	365	...
46	1416	127.0	127.0	214	1203	1168.4	1245	1320.8	28	2	1 ⁷ / ₈	13	380	...
48	1467	131.8	131.8	222	1254	1219.2	1302	1371.6	32	2	1 ⁷ / ₈	13	390	...
50	1530	138.2	138.2	230	1305	1270.0	1359	1428.8	32	2 ¹ / ₈	2	13	410	...
52	1581	143.0	143.0	237	1356	1320.8	1410	1479.6	32	2 ¹ / ₈	2	13	420	...
54	1657	150.9	150.9	251	1410	1371.6	1467	1549.4	28	2 ³ / ₈	2 ¹ / ₄	13	450	...
56	1708	152.4	152.4	259	1464	1422.4	1518	1600.2	28	2 ³ / ₈	2 ¹ / ₄	13	450	...
58	1759	157.2	157.2	265	1514	1473.2	1575	1651.0	32	2 ³ / ₈	2 ¹ / ₄	13	465	...
60	1810	160.1	160.1	272	1565	1524.0	1626	1701.8	32	2 ³ / ₈	2 ¹ / ₄	13	475	...

Dimensions of Class 400 Series A Flanges



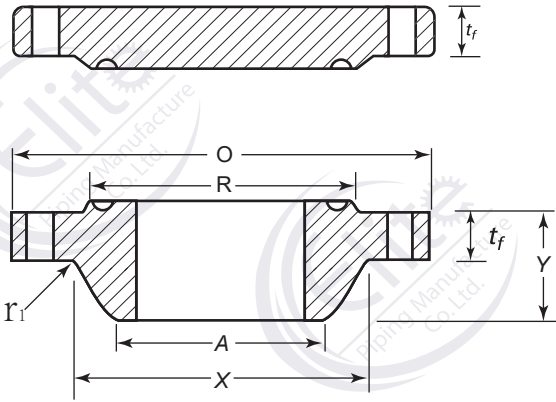
Ring Joint



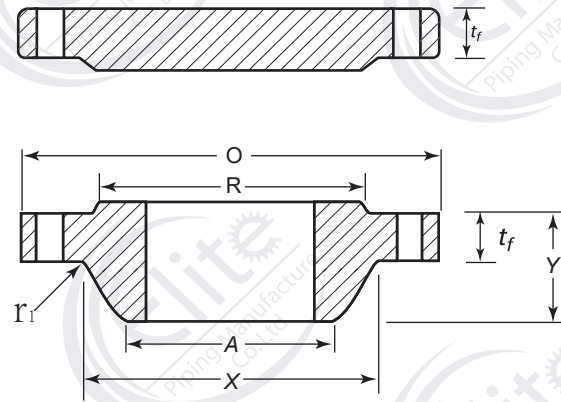
Raised Face

Nominal Pipe Size	O.D. of Flange, O	Minimum Thickness of Flange, t_f		Length Through Hub, Y	Diam. of Hub, X	Hub Diam. Top, A	Raised Face Diam., R	Drilling				Minimum Fillet Radius, r_i	Length of Bolts, L	
		WNF	Blind					Diam. of Bolt Circle	No. of Bolt Holes	Diam. of Bolt Hole, in.	Diam. of Bolt, in.		Stud Bolts	
													Raised Face 1.6 mm	Ring Joint
26	972	88.9	98.6	194	727	660.4	749	876.3	28	1 ⁷ / ₈	1 ³ / ₄	11	310	320
28	1035	95.2	104.6	206	783	711.2	800	939.8	28	2	1 ⁷ / ₈	13	330	340
30	1092	101.6	111.3	219	837	762.0	857	997.0	28	2 ¹ / ₈	2	13	345	360
32	1149	108.0	115.8	232	889	812.8	914	1054.1	28	2 ¹ / ₈	2	13	360	375
34	1206	111.3	122.2	241	945	863.6	965	1104.9	28	2 ¹ / ₈	2	14	365	380
36	1270	114.3	128.5	251	1000	914.4	1022	1168.4	32	2 ¹ / ₈	2	14	375	385
38	1206	124.0	124.0	206	1003	965.2	1035	1117.6	32	1 ⁷ / ₈	1 ³ / ₄	14	380	...
40	1270	130.0	130.0	216	1054	1016.0	1092	1174.8	32	2	1 ⁷ / ₈	14	405	...
42	1321	133.4	133.4	224	1108	1066.8	1143	1225.6	32	2	1 ⁷ / ₈	14	405	...
44	1384	139.7	139.7	233	1159	1117.6	1200	1282.7	32	2 ¹ / ₈	2	14	425	...
46	1441	146.0	146.0	244	1213	1168.4	1257	1339.8	36	2 ¹ / ₈	2	14	435	...
48	1511	152.4	152.4	257	1267	1219.2	1308	1403.4	28	2 ³ / ₈	2 ¹ / ₄	14	460	...
50	1568	157.2	158.8	268	1321	1270.0	1362	1460.5	32	2 ³ / ₈	2 ¹ / ₄	14	470	...
52	1619	162.1	163.6	276	1372	1320.8	1413	1511.3	32	2 ³ / ₈	2 ¹ / ₄	14	480	...
54	1702	169.9	171.4	289	1425	1371.6	1470	1581.2	28	2 ⁵ / ₈	2 ¹ / ₄	14	510	...
56	1753	174.8	176.3	298	1480	1422.4	1527	1632.0	32	2 ⁵ / ₈	2 ¹ / ₂	14	520	...
58	1803	177.8	180.8	306	1530	1473.2	1578	1682.8	32	2 ⁵ / ₈	2 ¹ / ₂	14	530	...
60	1886	185.7	189.0	319	1584	1524.0	1635	1752.6	32	2 ⁷ / ₈	2 ³ / ₄	14	560	...

Dimensions of Class 600 Series A Flanges



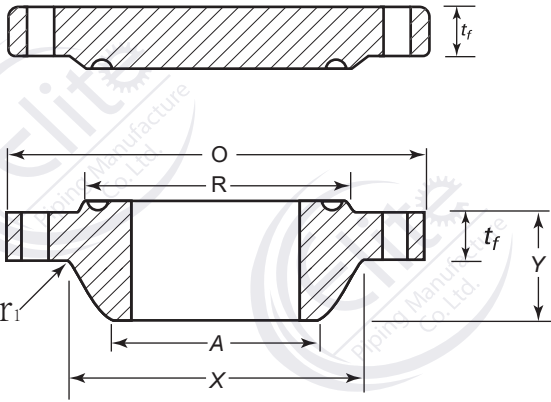
Ring Joint



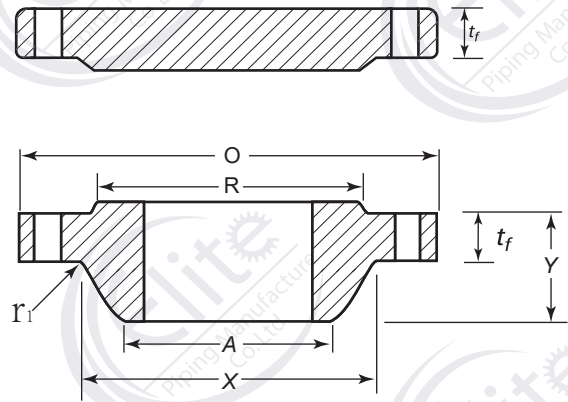
Raised Face

Nominal Pipe Size	O.D. of Flange, O	Minimum Thickness of Flange, t_f		Length Through Hub, Y	Diam. of Hub, X	Hub Diam. Top, A	Raised Face Diam., R	Drilling				Minimum Fillet Radius, r_1	Length of Bolts, L	
		WNF	Blind					Diam. of Bolt Circle	No. of Bolt Holes	Diam. of Bolt Hole, in.	Diam. of Bolt, in.		Stud Bolts	
													Raised Face 1.6 mm	Ring Joint
26	1016	108.0	125.5	222	748	660.4	749	914.4	28	2	1 $\frac{7}{8}$	13	355	365
28	1073	111.3	131.8	235	803	711.2	800	965.2	28	2 $\frac{1}{8}$	2	13	365	375
30	1130	114.3	139.7	248	862	762.0	857	1022.4	28	2 $\frac{1}{8}$	2	13	375	385
32	1194	117.3	147.6	260	917	812.8	914	1079.5	28	2 $\frac{3}{8}$	2 $\frac{1}{4}$	13	390	405
34	1245	120.6	153.9	270	973	863.6	965	1130.3	28	2 $\frac{3}{8}$	2 $\frac{1}{4}$	14	400	410
36	1314	124.0	162.1	282	1032	914.4	1022	1193.8	28	2 $\frac{5}{8}$	2 $\frac{1}{2}$	14	415	430
38	1270	152.4	155.4	254	1022	965.2	1054	1162.0	28	2 $\frac{3}{8}$	2 $\frac{1}{4}$	14	465	...
40	1321	158.8	162.1	264	1073	1016.0	1111	1212.8	32	2 $\frac{3}{8}$	2 $\frac{1}{4}$	14	480	...
42	1403	168.1	171.4	279	1127	1066.8	1168	1282.7	28	2 $\frac{5}{8}$	2 $\frac{1}{2}$	14	510	...
44	1454	173.0	177.8	289	1181	1117.6	1226	1333.5	32	2 $\frac{5}{8}$	2 $\frac{1}{2}$	14	520	...
46	1511	179.3	185.7	300	1235	1168.4	1276	1390.6	32	2 $\frac{5}{8}$	2 $\frac{1}{2}$	14	530	...
48	1594	189.0	195.3	316	1289	1219.2	1334	1460.5	32	2 $\frac{7}{8}$	2 $\frac{3}{4}$	14	565	...
50	1670	196.8	203.2	329	1343	1270.0	1384	1524.0	28	3 $\frac{1}{8}$	3	14	595	...
52	1721	203.2	209.6	337	1394	1320.8	1435	1574.8	32	3 $\frac{1}{8}$	3	14	605	...
54	1778	209.6	217.4	349	1448	1371.6	1492	1632.0	32	3 $\frac{1}{8}$	3	14	620	...
56	1854	217.4	225.6	362	1502	1422.4	1543	1695.4	32	3 $\frac{3}{8}$	3 $\frac{1}{4}$	16	645	...
58	1905	222.2	231.6	370	1553	1473.2	1600	1746.2	32	3 $\frac{3}{8}$	3 $\frac{1}{4}$	16	655	...
60	1994	233.4	242.8	389	1610	1524.0	1657	1822.4	28	3 $\frac{5}{8}$	3 $\frac{1}{2}$	17	690	...

Dimensions of Class 900 Series A Flanges



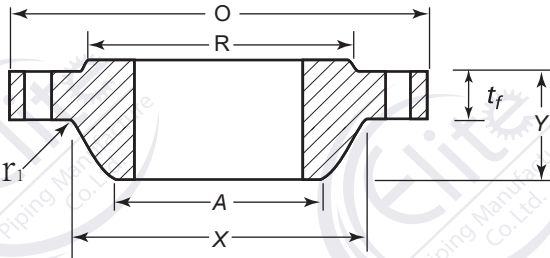
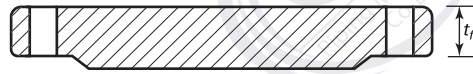
Ring Joint



Raised Face

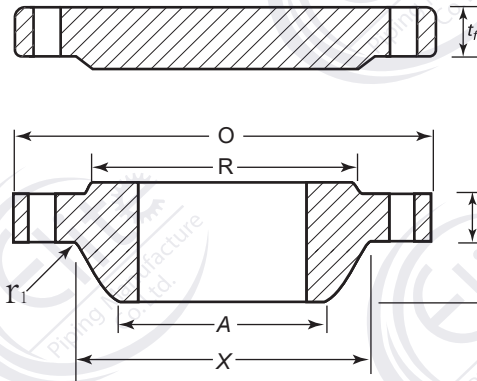
Nominal Pipe Size	O.D. of Flange, O	Minimum Thickness of Flange, t_f		Length Through Hub, Y	Diam. of Hub, X	Hub Diam. Top, A	Raised Face Diam., R	Drilling				Minimum Fillet Radius, r_1	Length of Bolts, L	
		WNF	Blind					Diam. of Bolt Circle	No. of Bolt Holes	Diam. of Bolt Hole, in.	Diam. of Bolt, in.		Stud Bolts	
													Raised Face 1.6 mm	Ring Joint
26	1086	139.7	160.3	286	775	660.4	749	952.5	20	2 ⁷ / ₈	2 ³ / ₄	11	465	485
28	1168	142.7	171.4	298	832	711.2	800	1022.4	20	3 ¹ / ₈	3	13	485	505
30	1232	129.4	182.4	311	889	762.0	857	1085.8	20	3 ¹ / ₈	3	13	495	520
32	1314	158.8	193.5	330	946	812.8	914	1155.7	20	3 ³ / ₈	3 ¹ / ₄	13	530	550
34	1397	165.1	204.7	349	1006	863.6	965	1225.6	20	3 ⁵ / ₈	3 ¹ / ₂	14	550	580
36	1460	171.4	214.4	362	1064	914.4	1022	1289.0	20	3 ⁵ / ₈	3 ¹ / ₂	14	565	595
38	1460	190.5	215.9	353	1073	965.2	1099	1289.0	20	3 ⁵ / ₈	3 ¹ / ₂	19	605	...
40	1511	196.8	223.8	363	1127	1016.0	1162	1339.8	24	3 ⁵ / ₈	3 ¹ / ₂	21	620	...
42	1562	206.2	231.6	371	1176	1066.8	1213	1390.6	24	3 ⁵ / ₈	3 ¹ / ₂	21	635	...
44	1648	214.4	242.8	391	1235	1117.6	1270	1463.5	24	3 ⁷ / ₈	3 ³ / ₄	22	665	...
46	1734	225.6	255.5	411	1292	1168.4	1334	1536.7	24	4 ¹ / ₈	4	22	700	...
48	1784	233.4	263.7	419	1343	1219.2	1384	1587.5	24	4 ¹ / ₈	4	24	715	...
50
52
54
56
58
60

Dimensions of Class 75 Series B Flanges



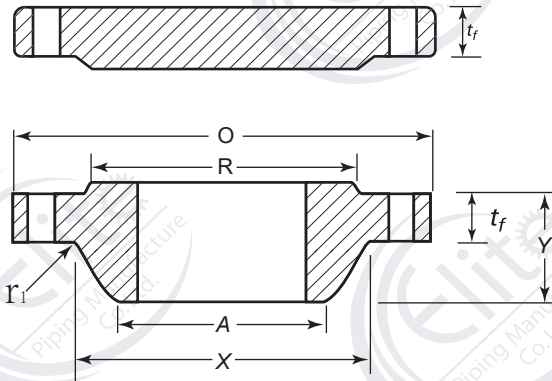
Nominal Pipe Size	O.D. of Flange, O	Minimum Thickness of Flange, t_f		Length Through Hub, Y	Diam. of Hub, X	Hub Diam. Top, A	Raised Face Diam., R	Drilling			Diam. of Bolt, in.	Minimum Fillet Radius, r_1	Length of Bolts, L
		WNF	Blind					Diam. of Bolt Circle	No. of Bolt Holes	Diam. of Bolt Hole, in.			
													Raised Face 1.6 mm
26	760	31.8	31.8	57	676	661.9	705	723.9	36	3/4	5/8	8	115
28	813	31.8	31.8	60	727	712.7	756	774.7	40	3/4	5/8	8	115
30	864	31.8	31.8	64	778	763.5	806	825.5	44	3/4	5/8	8	115
32	914	33.5	35.1	68	829	814.3	857	876.3	48	3/4	5/8	8	120
34	965	33.5	36.6	72	879	865.1	908	927.1	52	3/4	5/8	8	120
36	1034	35.1	40.9	84	935	915.9	965	992.1	40	7/8	3/4	10	130
38	1084	36.6	42.9	87	986	966.7	1016	1042.9	40	7/8	3/4	10	130
40	1135	36.6	42.9	91	1037	1017.5	1067	1093.7	44	7/8	3/4	10	130
42	1186	38.1	46.2	94	1087	1068.3	1118	1144.5	48	7/8	3/4	10	135
44	1251	41.4	47.8	103	1140	1119.1	1175	1203.5	36	1	7/8	10	150
46	1302	42.9	49.3	106	1191	1169.9	1226	1254.3	40	1	7/8	10	150
48	1353	44.6	52.6	110	1242	1220.7	1276	1305.1	44	1	7/8	10	160
50	1403	46.2	54.1	114	1294	1271.5	1327	1355.9	44	1	7/8	10	160
52	1457	46.2	55.6	119	1345	1322.3	1378	1409.7	48	1	7/8	10	160
54	1508	47.8	58.9	124	1397	1373.1	1429	1460.5	48	1	7/8	10	160
56	1575	49.3	60.5	133	1451	1423.9	1486	1521.0	40	1 1/8	1	11	170
58	1626	50.8	62.0	137	1502	1474.7	1537	1571.8	44	1 1/8	1	11	180
60	1676	54.1	65.3	143	1553	1525.5	1588	1622.6	44	1 1/8	1	11	185

Dimensions of Class 150 Series B Flanges



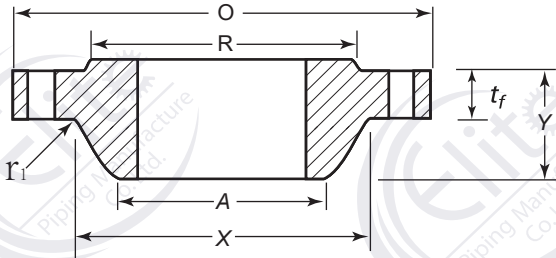
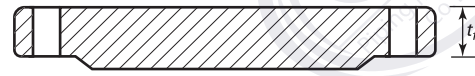
Nominal Pipe Size	O.D. of Flange, O	Minimum Thickness of Flange, t_f		Length Through Hub, Y	Diam. of Hub, X	Hub Diam. Top, A	Raised Face Diam., R	Drilling			Diam. of Bolt, in.	Minimum Fillet Radius, r_1	Length of Bolts, L
		WNF	Blind					Diam. of Bolt Circle	No. of Bolt Holes	Diam. of Bolt Hole, in.			Stud Bolts
													Raised Face 1.6 mm
26	786	39.9	42.9	87	684	661.9	711	744.5	36	7/8	3/4	10	140
28	837	42.9	46.2	94	735	712.7	762	795.3	40	7/8	3/4	10	145
30	887	42.9	49.3	98	787	763.5	813	846.1	44	7/8	3/4	10	145
32	941	44.4	52.6	106	840	814.3	864	900.2	48	7/8	3/4	10	150
34	1005	47.8	55.6	109	892	865.1	921	957.3	40	1	7/8	10	165
36	1057	50.8	57.2	116	945	915.9	972	1009.6	44	1	7/8	10	165
38	1124	52.6	62.0	122	997	968.2	1022	1069.8	40	1 1/8	1	10	185
40	1175	54.1	65.3	127	1049	1019.0	1080	1120.6	44	1 1/8	1	10	185
42	1226	57.2	66.8	132	1102	1069.8	1130	1171.4	48	1 1/8	1	11	190
44	1276	58.9	69.8	135	1153	1120.6	1181	1222.2	52	1 1/8	1	11	195
46	1341	60.5	73.2	143	1205	1171.4	1235	1284.2	40	1 1/4	1 1/8	11	205
48	1392	63.5	76.2	148	1257	1222.2	1289	1335.0	44	1 1/4	1 1/8	11	210
50	1443	66.8	79.5	152	1308	1273.0	1340	1385.8	48	1 1/4	1 1/8	11	215
52	1494	68.3	82.6	156	1360	1323.8	1391	1436.6	52	1 1/4	1 1/8	11	220
54	1549	69.8	85.9	161	1413	1374.6	1441	1492.2	56	1 1/4	1 1/8	11	225
56	1600	71.6	88.9	165	1465	1425.4	1492	1543.0	60	1 1/4	1 1/8	14	225
58	1675	73.2	91.9	173	1516	1476.2	1543	1611.4	48	1 3/8	1 1/4	14	235
60	1726	74.7	95.2	178	1570	1527.0	1600	1662.2	52	1 3/8	1 1/4	14	240

Dimensions of Class 300 Series B Flanges



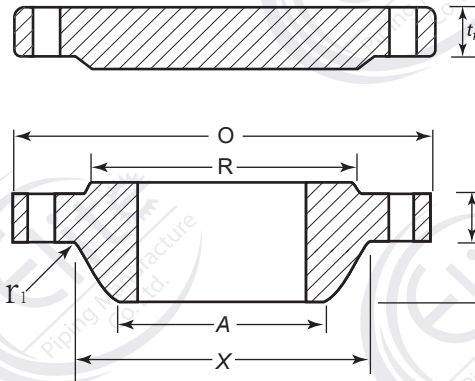
Nominal Pipe Size	O.D. of Flange, O	Minimum Thickness of Flange, t_f		Length Through Hub, Y	Diam. of Hub, X	Hub Diam. Top, A	Raised Face Diam., R	Drilling			Diam. of Bolt, in.	Minimum Fillet Radius, r_1	Length of Bolts, L
		WNF	Blind					Diam. of Bolt Circle	No. of Bolt Holes	Diam. of Bolt Hole, in.			Stud Bolts
													Raised Face 1.6 mm
26	867	87.4	87.4	143	702	665.2	737	803.1	32	1 ³ / ₈	1 ¹ / ₄	14	270
28	921	87.4	87.4	148	756	716.0	787	857.2	36	1 ³ / ₈	1 ¹ / ₄	14	270
30	991	92.2	92.2	156	813	768.4	845	920.8	36	1 ¹ / ₂	1 ³ / ₈	14	285
32	1054	101.6	101.6	167	864	819.2	902	977.9	32	1 ⁵ / ₈	1 ¹ / ₂	16	310
34	1108	101.6	101.6	171	917	870.0	952	1031.7	36	1 ⁵ / ₈	1 ¹ / ₂	16	310
36	1171	101.6	101.6	179	965	920.8	1010	1089.2	32	1 ³ / ₄	1 ⁵ / ₈	16	320
38	1222	109.5	109.5	190	1016	971.6	1060	1140.0	36	1 ³ / ₄	1 ⁵ / ₈	16	335
40	1273	114.3	114.3	197	1067	1022.4	1115	1190.8	40	1 ³ / ₄	1 ⁵ / ₈	16	345
42	1334	117.6	117.6	203	1118	1074.7	1168	1244.6	36	1 ⁷ / ₈	1 ³ / ₄	16	355
44	1384	125.5	125.5	213	1173	1125.5	1219	1295.4	40	1 ⁷ / ₈	1 ³ / ₄	16	370
46	1460	127.0	128.5	221	1229	1176.3	1270	1365.2	36	2	1 ⁷ / ₈	16	380
48	1511	127.0	133.4	222	1278	1227.1	1327	1416.0	40	2	1 ⁷ / ₈	16	380
50	1562	136.7	138.2	233	1330	1277.9	1378	1466.8	44	2	1 ⁷ / ₈	16	400
52	1613	141.2	142.5	241	1383	1328.7	1429	1517.6	48	2	1 ⁷ / ₈	16	410
54	1673	135.1	147.6	238	1435	1379.5	1480	1577.8	48	2	1 ⁷ / ₈	16	400
56	1765	152.4	155.4	267	1494	1430.3	1537	1651.0	36	2 ³ / ₈	2 ¹ / ₄	17	450
58	1827	152.4	160.3	273	1548	1481.1	1594	1713.0	40	2 ³ / ₈	2 ¹ / ₄	17	450
60	1878	149.4	165.1	270	1599	1531.9	1651	1763.8	40	2 ³ / ₈	2 ¹ / ₄	17	450

Dimensions of Class 400 Series B Flanges



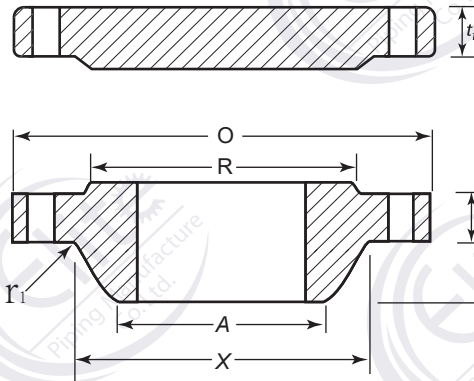
Nominal Pipe Size	O.D. of Flange, O	Minimum Thickness of Flange, t_f		Length Through Hub, Y	Diam. of Hub, X	Hub Diam. Top, A	Raised Face Diam., R	Drilling			Diam. of Bolt, in.	Minimum Fillet Radius, r_1	Length of Bolts, L
		WNF	Blind					Diam. of Bolt Circle	No. of Bolt Holes	Diam. of Bolt Hole, in.			Stud Bolts
													Raised Face 1.6 mm
26	851	88.9	88.9	149	689	660.4	711	781.0	28	1½	1¾	11	290
28	914	95.2	95.2	159	740	711.2	762	838.2	24	1⅝	1½	13	310
30	972	101.6	101.6	170	794	762.0	819	895.4	28	1⅝	1½	13	320
32	1035	108.0	108.0	179	845	812.8	873	952.5	28	1¾	1⅝	13	345
34	1086	111.3	111.3	187	899	863.6	927	1003.3	32	1¾	1⅝	14	345
36	1156	119.1	119.1	200	952	914.4	981	1066.8	28	1⅞	1¾	14	370
38
40
42
44
46
48
50
52
54
56
58
60

Dimensions of Class 600 Series B Flanges



Nominal Pipe Size	O.D. of Flange, O	Minimum Thickness of Flange, t_f		Length Through Hub, Y	Diam. of Hub, X	Hub Diam. Top, A	Raised Face Diam., R	Drilling			Diam. of Bolt, in.	Minimum Fillet Radius, r_1	Length of Bolts, L
		WNF	Blind					Diam. of Bolt Circle	No. of Bolt Holes	Diam. of Bolt Hole, in.			Stud Bolts
													Raised Face 1.6 mm
26	889	111.3	111.3	181	689	660.4	727	806.4	28	1 ³ / ₄	1 ⁵ / ₈	13	360
28	952	115.8	115.8	190	752	711.2	784	863.6	28	1 ⁷ / ₈	1 ³ / ₄	13	375
30	1022	125.5	127.0	205	806	762.0	841	927.1	28	2	1 ⁷ / ₈	13	395
32	1086	130.0	134.9	216	861	812.8	895	984.2	28	2 ¹ / ₈	2	13	415
34	1162	141.2	144.3	233	914	863.6	952	1054.1	24	2 ³ / ₈	2 ¹ / ₄	14	440
36	1213	146.0	150.9	243	968	914.4	1010	1104.9	28	2 ³ / ₈	2 ¹ / ₄	14	460
38
40
42
44
46
48
50
52
54
56
58
60

Dimensions of Class 900 Series B Flanges



Nominal Pipe Size	O.D. of Flange, O	Minimum Thickness of Flange, t_f		Length Through Hub, Y	Diam. of Hub, X	Hub Diam. Top, A	Raised Face Diam., R	Drilling			Diam. of Bolt, in.	Minimum Fillet Radius, r_1	Length of Bolts, L
		WNF	Blind					Diam. of Bolt Circle	No. of Bolt Holes	Diam. of Bolt Hole, in.			Stud Bolts
													Raised Face 1.6 mm
26	1022	134.9	153.9	259	743	660.4	762	901.7	20	2 ⁵ / ₈	2 ¹ / ₂	11	450
28	1105	147.6	166.6	276	797	711.2	819	971.6	20	2 ⁷ / ₈	2 ³ / ₄	13	490
30	1181	155.4	176.0	289	851	762.0	876	1035.0	20	3 ¹ / ₈	3	13	510
32	1238	160.3	185.7	303	908	812.8	927	1092.2	20	3 ¹ / ₈	3	13	530
34	1314	171.4	195.0	319	962	863.6	991	1155.7	20	3 ³ / ₈	3 ¹ / ₄	14	565
36	1346	173.0	201.7	325	1016	914.4	1029	1200.2	24	3 ¹ / ₈	3	14	570
38
40
42
44
46
48
50
52
54
56
58
60

A S M E B 1 6 . 4 7

The logo consists of the text "ASME B16.47" in a bold, sans-serif font. Each character is positioned above a vertical bar. The bars are colored in two shades: orange and dark blue. The heights of the bars vary to create a rhythmic, architectural feel. The letters 'A', 'M', 'B', '6', '4', and '7' are above orange bars, while 'S', 'E', '1', and the dot after '6' are above dark blue bars. The bars for 'A', 'M', 'B', '6', and '4' are the tallest, while the bars for 'S', '1', and '7' are shorter. The bar for 'E' is the same height as 'A', 'M', 'B', '6', and '4' but is dark blue. The bar for the dot after '6' is the shortest.